

AGENDA: OCTOBER 18, 2011 CITY OF KENTWOOD COMMISSION MEETING

1. Call meeting to order at 7:00 P.M.
2. Invocation by Rev. Cathi Huvaere of St. Paul United Methodist Church.
3. Pledge of Allegiance to the Flag (Clanton).
4. Roll Call: Brinks, Brown, Clanton, Coughlin, Cummings, VerWys and Mayor Root.
5. Approve agenda.
6. Acknowledge visitors and those wishing to speak to non-agenda items.
7. Consent agenda (roll call vote).
  - a. Receive and file minutes of the [Finance Committee Meeting](#) held on October 4, 2011.
  - b. Receive and file minutes of the [Ordinance Committee Meeting](#) held on October 4, 2011.
  - c. Receive and file minutes of the [Committee of the Whole Meeting](#) held on October 4, 2011.
  - d. Authorize the purchase of a replacement [Technical Rescue Trailer](#) from Look Trailers at a cost not to exceed \$11,747.00, which is budgeted in the Fire Equipment Fund Budget. (Finance Comm.)
  - e. Authorize the purchase of 32 Goodyear brand tires from [K&M Tires](#), using the State of Michigan MiDeal Program, at a total cost of \$11,193.48 with funds from the FY 2011-2012 approved General Fund – Fire Department budget. (Finance Comm.)
  - f. Authorize the Mayor to execute documents and take action necessary to: discontinue City of Kentwood Deferred Compensation Plan accounts at ING Life Insurance and Annuity Company (INC) and Nationwide Retirement Solutions (Nationwide); execute plan document and establish accounts at [ICMA Retirement Corporation](#) (ICMA-RC); transfer assets at ING and Nationwide to ICMAA-RC; and transmit future participant Contributions to ICMA-RC. (Finance Comm.)
  - g. Approve transfer of \$118,000.00 of previously approved 2011-2012 Street Resurfacing funds to the 2011-2012 Street Rehabilitation project to allow contracting for pavement rehabilitation and repaving services on [Gentian](#)

Agenda for October 18, 2011 City of Kentwood Commission Meeting

7. Consent agenda – Con't.
  - [Street](#) with Reith-Riley Construction Co., Inc. in an amount not to exceed \$110,000.00 (including a 10% contingency), and on-site inspection and testing services with Moore & Bruggink in an amount not to exceed \$8,000.00 (totaling an amount not to exceed \$118,000.00) with funds already approved by the City from the 2011-2012 Local Street Fund. (Service Comm.)
  - h. [City Payables](#).
8. Approve minutes of the regular [City Commission Meeting](#) held on October 4, 2011 as distributed.
9. Presentations and Proclamations.
10. Communications and Petitions.
11. Public Hearings.
  - a. Res. -11 to establish an Industrial Development District and to approve an Industrial Facilities Exemption Certificate in the City of Kentwood for [Lacks Exterior Trim Systems LLC](#) located at 4260 Air Lane Dr., SE; under Act 198. (roll call vote)
  - b. Res. -11 to approve the establishment of a Plant Rehabilitation District in the City of Kentwood for [Pureflex, Inc.](#) located at 4242 – 44<sup>th</sup> St., SE; under Act 198. (roll call vote)  
  
Res. -11 to approve an application for an Industrial Facilities Exemption Certificate for a Rehabilitation Facility in the City of Kentwood for [Pureflex, Inc.](#) located at 4242 - 44<sup>th</sup> St., SE; under Act 198. (roll call vote)
12. Report of Standing Committees.
13. Other Committees.
14. Bids.
15. Resolutions.
16. Ordinances.
  - a. Ord. -11 to amend Chapter 34, Article 2, Section 34-31(7) to include keeping [improved pathway facilities](#) clear of snow, ice or other obstructions that would result in impairing or impeding travel on such facility. (Ord. Comm.)

Agenda for October 18, 2011 City of Kentwood Commission Meeting

17. Appointments and Resignations.
18. Bills.
19. Comments of Commissioners and Mayor.
20. Adjournment.

Mary Bremer  
Deputy City Clerk

**PROPOSED MINUTES OF THE  
FINANCE COMMITTEE**

October 4, 2011  
Conference Room #119  
5:27 P.M.

Present: Commissioners: Chairperson Sharon R. Brinks, Frank Cummings, and Mayor Richard L. Root. Also present: Commissioners: Ray VerWys, Deputy City Clerk Mary Bremer, Information Systems Manager Bill Dudgeon, Fire Chief Brent Looman, Police Chief Richard Mattice, Assistant Finance Director Lorna Nenciarini, Community Development Director Terry Schweitzer, Fire Department Administrative Assistant Nancy Shane and Public Works Director Ron Woods.

**1. COPIER REPLACEMENTS.**

Motion by Cummings, seconded by Root, to recommend to the City Commission to authorize the purchase of two multi-function copiers in a total amount not to exceed \$21,644.00 from Ikon Office Solutions with funds from the FY 2011-2012 Property and Building and Police Equipment Fund budgets.

Motion Carried.

**2. AT&T WEB FILTERING.**

Motion by Cummings, seconded by Root, to recommend to the City Commission to authorize the Mayor to enter into a contract with AT&T for web filtering services at a total three year amount not to exceed \$15,100.00 with current year funding from the network upgrade allocation in the FY 2011-2012 Property & Building, Police Equipment and Fire Equipment Fund budgets. Future years will be funded from the General Fund – Information Services budget, subject to City Commission adoption of future budgets.

Motion Carried.

The meeting was adjourned at 5:29 P.M.

Mary Bremer  
Deputy City Clerk

Sharon Brinks  
Chairperson

**PROPOSED MINUTES OF THE  
ORDINANCE COMMITTEE**

October 4, 2011  
Conference Room #119  
5:30 P.M.

Present: Commissioners: Acting Chairperson Sharon Brinks (for Comm. Coughlin), Ray VerWys and Mayor Richard L. Root. Also present: Commissioners: Michael Brown and Frank Cummings. Also present: Deputy City Clerk Mary Bremer, Deputy Administrator Rich Houtteman, City Engineer Steve Kepley, Police Chief Richard Mattice, Fire Department Administrative Assistant Nancy Shane and Public Works Director Ron Woods.

**1. NUISANCE ORDINANCE – SNOW REMOVAL ON IMPROVED PATHWAYS.**

Deputy Administrator Rich Houtteman reviewed the memorandum dated October 4, 2011. Discussion followed regarding why this amendment is necessary at this time since the improved pathways are already being plowed by the City and how the current language is being enforced.

Motion by Root, seconded by VerWys, to recommend to the City Commission to amend Chapter 34, Article 2, Section 34-31(7) to include keeping improved pathway facilities clear of snow, ice or other obstructions that would result in impairing or impeding travel on such facility.

Motion Carried,  
Brinks dissenting.

The meeting was adjourned at 5:38 P.M.

Mary Bremer  
Deputy City Clerk

Sharon Brinks  
Acting Chairperson

**PROPOSED MINUTES OF THE  
ORDINANCE COMMITTEE**

October 4, 2011  
Conference Room #119  
5:30 P.M.

Present: Commissioners: Acting Chairperson Sharon Brinks (for Comm. Coughlin), Ray VerWys and Mayor Richard L. Root. Also present: Commissioners: Michael Brown and Frank Cummings. Also present: Deputy City Clerk Mary Bremer, Deputy Administrator Rich Houtteman, City Engineer Steve Kepley, Police Chief Richard Mattice, Fire Department Administrative Assistant Nancy Shane and Public Works Director Ron Woods.

**1. NUISANCE ORDINANCE – SNOW REMOVAL ON IMPROVED PATHWAYS.**

Deputy Administrator Rich Houtteman reviewed the memorandum dated October 4, 2011. Discussion followed regarding why this amendment is necessary at this time since the improved pathways are already being plowed by the City and how the current language is being enforced.

Motion by Root, seconded by VerWys, to recommend to the City Commission to amend Chapter 34, Article 2, Section 34-31(7) to include keeping improved pathway facilities clear of snow, ice or other obstructions that would result in impairing or impeding travel on such facility.

Motion Carried,  
Brinks dissenting.

The meeting was adjourned at 5:38 P.M.

Mary Bremer  
Deputy City Clerk

Sharon Brinks  
Acting Chairperson

**PROPOSED MINUTES OF THE  
COMMITTEE OF THE WHOLE**

October 4, 2011  
Conference Room #119  
5:50 P.M.

Present: Commissioners: Sharon Brinks, Michael W. Brown, Robert Coughlin (on speaker phone), Frank Cummings, Ray VerWys and Mayor Richard L. Root. Also present: Assistant City Engineer Tim Bradshaw, Deputy City Clerk Mary Bremer, Economic Development Planner Lisa Golder, City Engineer Steve Kepley, Police Chief Richard Mattice, Community Development Director Terry Schweitzer, Fire Department Administrative Assistant Nancy Shane, and Public Works Director Ron Woods. Also: Planning Commissioner John Helder and Julie Makarewicz of the Grand Rapids Press.

Commissioner Cummings was Acting Chairperson.

**1. BRETON AVENUE CORRIDOR DESIGN AND WALMA AVENUE INTERSECTION IMPROVEMENTS.**

Community Development Director Schweitzer began the meeting with the presentation that was made to the Planning Commission at their September 27<sup>th</sup> meeting with slides updated from that meeting.

The overview issues included speed being an issue, a T-intersection with no traffic signal, limited pedestrian crossing opportunities, expected increased pedestrian activity with the addition of the new library and the crossing for the proposed extension of the non-motorized trail.

Some of the Planning Commission considerations included: changing Breton from a 4 lane road to a 3 lane road; the locations of additional pedestrian crossings; additional bus stop design and locations which will not impede traffic flow; and whether to install a round-about at that intersection.

Schweitzer reported that after considerable discussion, the Planning Commission is recommending to change Breton from 4 lanes to 3 lanes (8-0 vote) and a round-about installed at the Walma-Breton intersection (6-2 vote).

City Engineer Kepley reviewed some of the changes that would need to be implemented if the number of lanes is decreased including: bus stops location and design; pedestrian movements if a round-about is installed; and some of the discussions with personnel from the Disability Advocates and Association for the Blind.

Discussion then continued among the City Commissioners as to traffic concerns if lanes were reduced from 4 to 3, the advantages and disadvantages of a round-

Committee of the Whole Meeting  
October 4, 2011

about, the development of Breton south from 52<sup>nd</sup> to 60<sup>th</sup> and if it would impact traffic flows, the option of a traffic signal rather than a round-about and where to locate pedestrian crossings.

It was the consensus of the Commission that these issues be resolved at a Committee of the Whole meeting on October 18<sup>th</sup> with a final decision to be made at that meeting.

The meeting was adjourned at 6:40 P.M.

Mary Bremer  
Deputy City Clerk

Frank Cummings  
Acting Chairperson



# MEMORANDUM

**TO:** Finance Committee  
**FROM:** Brent Looman, Fire Chief; with  
Carla Kane, Buyer  
**DATE:** October 10, 2011  
**TOPIC:** Fire Technical Rescue Trailer

**ACTION REQUESTED:** It is requested that the Finance Committee recommend to the City Commission that it authorize the purchase of a replacement Technical Rescue Trailer from Look Trailers at a cost not to exceed \$11,747.00, which is budgeted in the Fire Equipment Fund Budget.

**BACKGROUND:** The Fire Department uses an enclosed trailer to store and transport technical rescue equipment. This equipment is used for emergency responses such as trench rescues; it is also on stand-by when the DPW works underground, as required by law.

## BUDGET INFORMATION

Amount Budgeted:	\$ 20,000
Proposed Expenditure:	<u>\$ 11,747</u>
Remaining:	\$ 8,253

The current trailer, which is 15 years old, was first used by the DPW before being transferred to the Fire Department. The trailer's relatively low 7,000 pound Gross Vehicle Weight capacity, and its overall dimensions, has hindered its effectiveness. Now that the trailer has reached the end of its useful life, the Fire Department has an opportunity to specify a trailer that better meets the Department's and the community's needs.

The Fire Department solicited bids for a 10,000 pound Gross Vehicle Weight trailer that is 22 feet long, 8 feet wide, and 7 feet high. As a result of competitive bidding, 5 proposals were received:

<b>Look Trailers</b>	<b>\$11,210.00</b>
<b>Grand Rapids RV Sales</b>	\$13,935.00
<b>Weingartz Supply Co.</b>	\$15,324.00
<b>Transport Service, Inc.</b>	\$15,412.00
<b>Midway Trailer, Inc.</b>	\$16,484.62

Adding decals, the total cost will be \$11,747.00. Staff visited the manufacturing facility of the apparent low bidder, Look Trailers, in order to confirm its qualifications according to the specifications.

The current trailer will be sold at auction.

If you have any questions, please call Brent Looman at 554-0801 or Carla Kane at 554-0772. Thank you for your consideration of this request.





## MEMORANDUM

**TO:** Finance Committee  
**FROM:** Brent Looman, Fire Chief; with  
Lorna Nenciarini, Assistant Finance Director  
**DATE:** October 11, 2011  
**TOPIC:** Purchase of tires

**ACTION REQUESTED:** It is requested that the Finance Committee recommend to the City Commission that it authorize the purchase of 32 Goodyear brand tires from K&M Tires, using the State of Michigan MiDeal Program, at a total cost of \$11,193.48. Funds for this normal operating expense are budgeted in the General Fund Fire Department budget.

**BACKGROUND:** An essential component of preparedness is ensuring that resources are able to respond where they are needed. Maintaining tires is a normal part of this process. Purchases are made on an as-needed basis throughout the year, and are usually within the scope of the Mayor's authority.

This fall, three engines, the air delivery vehicle, and the aerial platform all require tires. The number of tires needed pushed the total price to the level that Commission approval is required. The best prices for these large, heavy-duty tires are offered through the State of Michigan MiDeal program. The City's purchasing rules allow for the use of this program.<sup>1</sup> Goodyear Tire is the state's chosen vendor, and K&M Tires is the retail distributor.

Approval of this purchase will allow the Fire Department to continue to operate in a safe and efficient manner.

---

<sup>1</sup> Resolution No. 79-03, adopted December 3, 2003 as amended by City of Kentwood Resolution No. 15-08, adopted February 5, 2008:

“6. Purchase of goods and services through contracts executed between vendors and other public entities. The City may purchase goods and services through bids and purchase contracts issued by other public entities without a separate bidding process conducted by the City, provided that the bidding or contracting procedure used by the other public entity complies with the City's purchasing requirements.”



## MEMORANDUM

TO: Finance Committee  
FROM: Thomas H. Chase, Finance Director, on behalf of the Deferred Compensation Committee (Mayor Richard L. Root, Human Resources Director Lisa A. Sonogo, and Thomas H. Chase)  
DATE: October 14, 2011  
RE: Third-party Administrator Changes – Deferred Compensation Plan

**ACTION REQUESTED:** It is requested that the Finance Committee recommend that the City Commission authorize the Mayor to execute documents, and take the actions necessary, to:

- discontinue City of Kentwood Deferred Compensation Plan accounts at ING Life Insurance and Annuity Company (ING) and Nationwide Retirement Solutions (Nationwide);
- execute plan document and establish accounts at ICMA Retirement Corporation (ICMA-RC);
- transfer assets at ING and Nationwide to ICMA-RC; and
- transmit future participant contributions to ICMA-RC.

**BACKGROUND:** The City offers eligible employees the opportunity to defer income and save for retirement through the City of Kentwood Deferred Compensation Plan, an Internal Revenue Code 457(b) plan (IRC 457 Plan) with ING and Nationwide as third-party administrators. The City also provides an IRC 401(a) defined contribution pension plan (IRC 401 Plan) with ICMA-RC as third-party administrator.

City staff (two members of the Deferred Compensation Committee), with the assistance of the City's Investment Consultant (Consultant), has completed the task of reviewing the City's IRC 401(a)/457 Plans and soliciting third-party administrators with goals, as follows:

- review and confirm that investments provided meet fiduciary responsibilities;
- group these plans under one third-party administrator that can:
  - reduce costs paid by participants;
  - offer the same menu of investment choices to both plans' participants;
  - offer a varied slate of investments;
  - provide comprehensive information on each investment fund's expenses and fees, management team, strategy, portfolio holdings, return, risk and risk-adjusted results versus the appropriate benchmark and peer group, over current and longer time periods;
  - provide timely and useful communications regarding investments;
  - coordinate a more comprehensive participant education program; and
  - simplify plan administration.

The Consultant solicited proposals from a wide range of providers. Eight proposals, which included all current administrators, were received. The Consultant reviewed the proposals and prepared a document to allow comparison of providers regarding twelve attributes, including organization and

history, quality assurance, client service, recordkeeping and administration, regulatory services, reporting and tools, communication and education, plan conversion, systems capabilities and hardware, investments, conversion fees, and on-going fees.

Using this information, City staff and the Consultant evaluated the proposals, and selected five (Diversified Investment Advisors, Fifth Third Institutional Services, ICMA Retirement Corporation, ING U.S. Retirement Services, and Nationwide Retirement Solutions) for interviews. Following first interviews, City staff and the Consultant prepared and submitted follow-up questions and evaluated the answers provided. City staff and the Consultant then selected two candidates (ICMA Retirement Corporation and ING U.S. Retirement Services) for second interviews. After the second interviews, based on the process described, City staff and Consultant made a recommendation to the Deferred Compensation Committee.

At its recent meeting, based on the City staff and Consultant recommendation, the Deferred Compensation Committee voted to recommend City Commission action in accord with the action requested above.

These actions will:

- reduce IRC 457 Plan participant-paid fees (currently ranging from approximately 1.75 – 2.05%) to 0.195%;
- reduce IRC 401 Plan participant-paid fees (currently approximately 1.090%) to 0.195%; and
- save significant costs each year that will enhance each participant's return on investment and their progress toward retirement savings targets;
- allow the City to meet the other above-described goals.

If you have any questions, please contact Tom Chase at (616) 554-0766 or Lisa Sonego at (616) 554-0732. Thank you for your consideration of this request.



## MEMORANDUM

**TO:** Service Committee  
**FROM:** Tim Bradshaw, P.E., Assistant City Engineer  
**DATE:** October 18, 2011  
**TOPIC:** 2011 Pavement Rehabilitation Program – Gentian Street

**ACTION REQUESTED:** It is requested that the Service Committee recommend to the City Commission approval to transfer \$118,000 of previously approved 2011 Street Resurfacing funds to the 2011 Street Rehabilitation project. This transfer will allow contracting for pavement rehabilitation and repaving services with Reith-Riley Construction Co., Inc., in an amount not to exceed \$110,000 (including a 10% contingency), and on-site inspection and testing services with Moore & Bruggink, in an amount not to exceed \$8,000.00 (totaling an amount not to exceed \$118,000.00), with funds already approved by City Commission from the FY2012 Local Street Fund.

**BACKGROUND:** Gentian Street from Kalamazoo Avenue to Loftwood Street was originally scheduled for a “wedging” treatment as a part of the 2011 Street Resurfacing Program to improve drainage. Wedging should be considered a short term repair that will need to be monitored again as the pavement ages. Placing new concrete curbs promotes a durable and positive long term drainage course.

The approved 2011 Street Resurfacing Program budget is \$1,525,000. Currently \$239,000 remains in the 2011 Street Resurfacing Program approved budget due to better bidding prices and no use of contingency funds. Thus the request is for a transfer of funds from the balance that remains in the Resurfacing Program Funds to the Rehabilitation Program.

The Contractors associated with the 2011 Street Resurfacing Program are not capable of constructing the recommended improvements for Gentian Street. Reith-Riley Construction has been contracted to complete the 2011 Rehabilitation Program and is capable of completing the work. This request allows Reith-Riley funding to complete the Gentian Street Project at already bid unit pricing. If approved, all work is scheduled and expected to be completed by November 11<sup>th</sup>.

The scheduling of the work could be delayed until next year, but the problem would remain and need to be rectified as it is a continuous maintenance issue for the DPW. Residents have been sent letters informing them that this project may occur beginning October 19<sup>th</sup> if the funding transfer is approved.

In summary, this is not a request for any additional funds, but a request to transfer remaining funds from one cost center to another.

If you have any questions, please contact Tim Bradshaw at (616) 554-0739. Thank you for your consideration of this request.

---

Total for fund 101 GENERAL FUND	188,558.24
Total for fund 202 MAJOR STREET	970,771.50
Total for fund 203 LOCAL STREET	944,633.20
Total for fund 205 POLICE & FIRE PROTECTION	5,343.85
Total for fund 208 PARK & RECREATION FUND	855.76
Total for fund 213 DRAIN FUND	11,696.92
Total for fund 219 STREET LIGHTING	41,767.45
Total for fund 230 LANDFILL REMEDIATION FUND	10,143.37
Total for fund 271 LIBRARY FUND	359.77
Total for fund 296 HOUSING COMMISSION	9,925.44
Total for fund 401 PROPERTY BUILDING FUND	2,223.11
Total for fund 453 CONSTRUCTION FUND 2009	9,618.52
Total for fund 580 WATER FUND	15,407.34
Total for fund 590 SEWER FUND	178,853.93
Total for fund 640 DPW EQUIPMENT FUND	11,193.97
Total for fund 703 TAX COLLECTION FUND	157,583.46
TOTAL - ALL FUNDS	2,558,935.83

Check Date	Bank	Check #	Payee	Description	GL #	Amount
10/03/2011	AP	193518	KENT COUNTY REGISTER OF DEED	CMS ENERGY XING @ BRETON	202-202-963.000	20.00
10/06/2011	AP	193519	CLEVELAND, GAIL	RECREATION FEES REFUND	101-000-612.000	10.00
10/06/2011	AP	193520	HILL, LATISHA	RECREATION FEES REFUND	101-000-612.000	11.00
10/06/2011	AP	193521	HARRINGTON, CHRISTINA	RECREATION FEES REFUND	101-000-612.000	30.00
10/06/2011	AP	193522	OLSEN, DUSTIN	RECREATION FEES REFUND	101-000-612.000	41.00
10/06/2011	AP	193523	LAMBERT, KATHY	RECREATION FEES REFUND	101-000-612.000	11.00
10/06/2011	AP	193524	NELSON, DANIEL	Water	580-000-040.000	25.06
		193524		Sewer RTS	590-000-040.000	32.67
						57.73
10/06/2011	AP	193525	A 1 ASPHALT SEALING & REPAIR	ASPHALT PATCHING @ BURTON & ROLAN	202-202-778.001	930.00
		193525		PAVING @ BONNIE & EDSEL	580-580-784.000	1,350.00
						2,280.00
10/06/2011	AP	193526	AD-AMERICA MARKETING GROUP	SUPPLIES	101-691-740.000	336.42
10/06/2011	AP	193527	ADVANCE NEWSPAPERS	PRINTING & PUBLISHING	101-101-900.000	820.00
10/06/2011	AP	193528	JOSHUA J ALLEN	REC DEPT PAY	101-691-801.000	150.00
10/06/2011	AP	193529	AMERICAN HOTEL REGISTER CO	SUPPLIES	101-336-740.000	287.81
10/06/2011	AP	193530	AMERICAN MOBILE GENERATOR SE	AUTO SUPPLIES	101-336-861.000	162.71
10/06/2011	AP	193531	VAL ANDRES	SUPPLIES - ARCH	101-691-740.000-10018691	7.98
10/06/2011	AP	193532	ARROW UNIFORM	UNIFORM EXPENSE	101-371-743.000	28.04
		193532		UNIFORM EXPENSE	101-449-743.000	15.89
						43.93
10/06/2011	AP	193533	ASSOCIATED HEATING SALES	SUPPLIES	101-336-740.000	1,091.97
10/06/2011	AP	193534	AT&T	616 534 7117 767 3 - 9/22 - 10/2	101-336-850.000	167.82
		193534		616 455 2201 126 8 - 09/25 - 10/	101-738-850.000	555.36
						723.18
10/06/2011	AP	193535	BRADLEY'S ACE HARDWARE	CASH DISCOUNTS	101-000-687.000	(0.45)
		193535		AUTO SUPPLIES	101-336-861.000	9.49

Check Date	Bank	Check #	Payee	Description	GL #	Amount
		193535		SUPPLIES	101-441-740.000	13.49
						<u>22.53</u>
10/06/2011	AP	193536	BROADMOOR PRODUCTS INC	SUPPLIES	101-101-777.000	353.83
		193536		SUPPLIES	101-738-740.000	353.83
						<u>707.66</u>
10/06/2011	AP	193537	GREGORY D CARMER	REC PAY	101-691-801.000	80.00
10/06/2011	AP	193538	JONATHON CARTER	EXTTR - J. CARTER	101-301-956.000-11507301	63.40
10/06/2011	AP	193539	TOM CHASE	MAINT AGREEMENTS - 9/1 - 9/27/11	101-101-941.000	(1.78)
		193539		SUPPLIES - 9/1 - 9/27/11	101-201-740.000	(2.50)
		193539		TELEPHONE - 9/1 - 9/27/11	101-201-850.000	(10.48)
		193539		VEHICLE MILEAGE - 9/1 - 9/27/11	101-201-864.000	23.82
		193539		SUPPLIES - 9/1 - 9/27/11	580-580-740.000	75.00
						<u>84.06</u>
10/06/2011	AP	193540	MICHELE CLARK	DAVE RAMSEY BUSINESS SEMINAR (4)	101-301-956.000-11507301	316.00
10/06/2011	AP	193541	COMCAST	01720545850038 - 10/2 - 11/1	101-101-729.000	64.95
		193541		01720441655011 - 10/1 - 10/31	101-101-777.000	74.22
						<u>139.17</u>
10/06/2011	AP	193542	COMMUNICATIONS SPECIALISTS	AUTO SUPPLIES	101-301-861.000	45.00
10/06/2011	AP	193543	CONSUMERS ENERGY	100000185502	101-101-920.000	5,302.32
		193543		100000185502	101-136-920.000	3,229.60
		193543		100000185502	101-301-920.000	7,535.71
		193543		100040306902	101-441-920.000	30.97
		193543		100014708596	202-202-778.002	17.20
		193543		100000188035	580-580-920.000	5,665.37
						<u>21,781.17</u>
10/06/2011	AP	193544	CORPORATE CLEAN SERVICES, LL	CUSTODIAL SERVICES - 9/16 - 9/30/	101-738-801.000	3,482.50
10/06/2011	AP	193545	CUTLERVILLE-GAINES CHAMBER	GAINES COMMUNITY EXPO 2012	101-691-740.000	75.00
10/06/2011	AP	193546	DAN WILLEMSTEIN CEMENT CONTR	CEMENT SUBCONTRACTOR - 215 58TH S	296-000-206.000	400.00
10/06/2011	AP	193547	DANIEL ROBERT STEVENS	REC PAY	101-691-801.000	150.00
10/06/2011	AP	193548	BRIAN LEE DOEZEMA	REHAB PHASE 2- 215 58TH LINDA HI	296-000-206.000	1,949.54

Check Date	Bank	Check #	Payee	Description	GL #	Amount
10/06/2011	AP	193549	DORNBOS SIGN & SAFETY INC	STAUFFER & NE PARK RESTROOM	208-208-975.000-10031691	459.73
		193549		PINEWOOD PARK RESTROOM	208-208-975.000-11011691	229.87
						689.60
10/06/2011	AP	193550	DTE ENERGY	457353600101	101-101-921.000	137.70
		193550		460975700010	101-336-921.000	848.32
		193550		457353600119	101-441-921.000	772.26
		193550		460966400018	101-691-921.000	54.03
		193550		457353600093	580-580-921.001	50.00
						1,862.31
10/06/2011	AP	193551	BILL DUDGEON	SUPPLIES - 9/26 - 9/28/11	101-258-740.000	(6.00)
		193551		VEHICLE MILEAGE - 9/26 - 9/28/11	101-258-864.000	143.00
						137.00
10/06/2011	AP	193552	JUANAKEE DURDEN	REC PAY	101-691-801.000	100.00
10/06/2011	AP	193553	EAST JORDAN IRON WORKS	MAINTENANCE DRAINS	213-213-778.004	267.88
10/06/2011	AP	193554	GIVE 'EM A BRAKE SAFETY	STAUFFER & NE PARK RESTROOMS	208-208-975.000-10031691	63.57
10/06/2011	AP	193555	JOSE GONZALES	REC DEPT PAY	101-691-801.000	50.00
10/06/2011	AP	193556	GORDON FOOD SERVICE	SUPPLIES	101-691-740.000	16.98
10/06/2011	AP	193557	RON HERRON	REC PAY	101-691-801.000	240.00
10/06/2011	AP	193558	ROBERT HIGHLAND	SUPPLIES - SEPT 2011	101-258-740.000	15.29
		193558		VEHICLE MILEAGE - SEPT 2011	101-258-864.000	9.24
						24.53
10/06/2011	AP	193559	DONALD S HOOGSTRA	REC PAY	101-691-801.000	80.00
10/06/2011	AP	193560	INTEGRITY TREE SERVICE	REMOVE TREE @ 3720 LAKE DR.	202-202-778.001	860.00
10/06/2011	AP	193561	KENT COUNTY TREASURER-DPW	LANDFILL CLEANUP EXPENSE- AUG 201	230-230-975.001	7,762.84
10/06/2011	AP	193562	STEPHEN KEPLEY	SUPPLIES - 8/2 - 9/22/11	101-449-740.000	78.57
		193562		TELEPHONE - 8/2 - 9/22/11	101-449-850.000	(20.00)
		193562		VEHICLE MILEAGE - 8/2 - 9/22/11	101-449-864.000	496.65
						555.22
10/06/2011	AP	193563	BILL KOTCHKA	REC PAY	101-691-801.000	160.00

Check Date	Bank	Check #	Payee	Description	GL #	Amount
10/06/2011	AP	193564	JONATHAN LACROIX	REC PAY	101-691-801.000	100.00
10/06/2011	AP	193565	LADY AMERICANA MIDWEST	MATTRESS, TWIN XL 39X80 TOPAZ	101-336-975.000	762.16
10/06/2011	AP	193566	JOHNNY LIU	REC DEPT PAY	101-691-801.000	45.00
10/06/2011	AP	193567	LOWES HOME IMPROVEMENT	SUPPLIES	101-101-777.000	37.35
		193567		GUNTR - FIREARMS TRAINING (GENERA	101-301-740.000-11508301	56.28
		193567		SUPPLIES	101-336-740.000	8.29
		193567		SUPPLIES	101-441-740.000	25.26
						127.18
10/06/2011	AP	193568	JOHN J MC CABE	REC DPT PAY	101-691-801.000	130.00
10/06/2011	AP	193569	MC SPORTS INC	ATHLETIC SHOES - TAMMENS	101-336-743.000	50.00
10/06/2011	AP	193570	MENARDS-WYOMING	PARK MAINT SUPPLIES	101-441-740.208	20.37
10/06/2011	AP	193571	MICHIGAN ASSOCIATION OF PLAN	CONFERENCE EXP - 2 STAFF 1 PC	101-400-865.000	770.00
10/06/2011	AP	193572	JAMES MORNINGSTAR	EXTTR - MORNINGSTAR	101-301-956.000-11507301	8.50
10/06/2011	AP	193573	NATIONAL LADDER & SCAFFOLD C	UNIFORM EXPENSE	101-441-743.000	155.00
10/06/2011	AP	193574	NATIONAL PATENT ANALYTICAL S	MAINT AGREEMENTS - 10/1/11 - 9/30	101-301-941.000	985.00
10/06/2011	AP	193575	NEAL'S TRUCK PARTS	AUTO SUPPLIES	101-336-861.000	209.93
10/06/2011	AP	193576	NGUYEN, HUE HIEN-THI	REIMB INSTALL OF STREET TREE	101-000-216.327	370.00
10/06/2011	AP	193577	NICHOLS PAPER & SUPPLY CO.	SUPPLIES	101-441-740.000	170.84
		193577		SUPPLIES	101-738-740.000	48.78
						219.62
10/06/2011	AP	193578	OFFICE TEAM	CONTRACTUAL SERVICES	101-136-801.000	650.25
10/06/2011	AP	193579	ONE SOURCE RENTAL	FALL FLEA MARKET	101-691-740.000	53.93
10/06/2011	AP	193580	PAGE HARDWARE SUPPLY	SUPPLIES JC COURT	101-136-740.136	7.20
		193580		SUPPLIES JC POLICE	101-301-740.301	16.80
						24.00
10/06/2011	AP	193581	PAINTERS SUPPLY & EQUIPMENT	SPORTS FIELD SUPPLIES	101-441-740.691	461.76

Check Date	Bank	Check #	Payee	Description	GL #	Amount
10/06/2011	AP	193582	LORRAINE PERALES	SUPPLIES - SEPT 2011	101-258-740.000	44.51
		193582		VEHICLE MILEAGE - SEPT 2011	101-258-864.000	124.63
		193582		CONF. EXP - FHETS	101-258-865.000	136.39
						<hr/> 305.53
10/06/2011	AP	193583	PFEIFFER LINCOLN MERCURY	AUTO SUPPLIES	101-301-861.000	1,280.63
10/06/2011	AP	193584	POSITIONING SOLUTIONS COMPAN	SUPPLIES	101-449-740.000	53.61
10/06/2011	AP	193585	PS MONOGRAMS	SUPPLIES	101-136-740.000	110.00
10/06/2011	AP	193586	RASCHI'S EXTERIOR INC	REHAB - 5136 BRIDLE CREEK:WORKMAN	296-000-206.000	6,600.00
10/06/2011	AP	193587	RIETH-RILEY CONSTRUCTION INC	ROAD SURFACE MAINT 2011	202-202-778.001-12002449	111,590.86
		193587		ROAD SURFACE MAINT 2011	203-203-778.001-12002449	256,746.00
						<hr/> 368,336.86
10/06/2011	AP	193588	VAL ROMEO	VEHICLE MILEAGE - SEPT 2011	101-691-864.000	38.50
		193588		VEHICLE MILEAGE - SEPT 2011 - ARC	101-691-864.000-10018691	146.30
						<hr/> 184.80
10/06/2011	AP	193589	RONALD ANGER	CRIPPEN DRAIN	213-213-778.004	9,909.04
10/06/2011	AP	193590	RANDY RUESINK	VEHICLE MILEAGE - 4/25 - 6/30/11	101-441-864.000	196.91
10/06/2011	AP	193591	RVL ELECTRIC LLC	REHAB - 215 - 58TH STREET	296-000-206.000	878.50
10/06/2011	AP	193592	S & H TROPHY	SUPPLIES	101-691-740.000	259.00
10/06/2011	AP	193593	DALE SANBORN	CONTRACTUAL SERVICES	101-691-801.000	100.00
10/06/2011	AP	193594	TERRY SCHWEITZER	VEHICLE MILEAGE - 9/27 - 10/3/11	101-400-864.000	19.25
		193594		MI PLANNING CONF REG REIMB	101-400-865.000	225.00
						<hr/> 244.25
10/06/2011	AP	193595	SECURALARM	4742 WALMA AVE SE	101-136-740.136	164.55
		193595		4742 WALMA AVE SE	101-301-740.301	383.95
						<hr/> 548.50
10/06/2011	AP	193596	JOHN SEVENS PAINT & WALLPAPE	PAINT PROGRAM	296-296-740.003	32.70
10/06/2011	AP	193597	SOS OFFICE SUPPLY	OFFICE SUPPLIES	101-101-727.000	209.66
		193597		SUPPLIES	101-201-740.000	186.68
		193597		SUPPLIES	101-253-740.000	69.10

Check Date	Bank	Check #	Payee	Description	GL #	Amount
		193597		OFFICE SUPPLIES	101-301-727.000	247.33
		193597		SUPPLIES	101-336-740.000	57.30
		193597		SUPPLIES	101-371-740.000	3.62
		193597		OFFICE SUPPLIES	580-580-727.000	16.16
		193597		OFFICE SUPPLIES	590-590-727.000	16.16
						806.01
10/06/2011	AP	193598	SPARTAN STORES LLC	SUPPLIES	101-336-740.000	234.87
		193598		SUPPLIES	101-691-740.000	56.90
						291.77
10/06/2011	AP	193599	SPECTRUM HEALTH OCC SERVICES	SUPPLIES	101-301-740.000	79.00
10/06/2011	AP	193600	ROBERT STEWART	REC PAY	101-691-801.000	50.00
10/06/2011	AP	193601	FLORENCE STIVERS	BIRTHDAY BINGO PRIZES	101-691-740.000	68.65
10/06/2011	AP	193602	TIME EMERGENCY EQUIPMENT	AUTO SUPPLIES	101-336-861.000	89.94
10/06/2011	AP	193603	TOM DEYOUNG'S ENGINE & MOWER	AUTO SUPPLIES	101-441-861.000	79.00
10/06/2011	AP	193604	TSI INC	CALIBRATION OF FIT TESTER	101-336-934.000	1,568.85
10/06/2011	AP	193605	US POSTMASTER	POSTAGE - BULK MAIL ACCT# 1291	101-101-728.000	2,000.00
10/06/2011	AP	193606	RANDY VAN KAMPEN	REC DEPT PAY	101-691-801.000	100.00
10/06/2011	AP	193607	GILBERT VARELA	REC DEPT PAY	101-691-801.000	225.00
10/06/2011	AP	193608	HUGO LOPEZ VASQUEZ	REC PAY	101-691-801.000	175.00
10/06/2011	AP	193609	VERIZON WIRELESS	TELEPHONE - SEPT 2011	101-101-850.000	44.96
		193609		TELEPHONE - SEPT 2011	101-171-850.000	113.96
		193609		TELEPHONE - SEPT 2011	101-201-850.000	20.30
		193609		TELEPHONE - SEPT 2011	101-258-850.000	1,499.39
		193609		TELEPHONE - SEPT 2011	101-301-850.000	748.88
		193609		TELEPHONE - SEPT 2011	101-336-850.000	94.04
		193609		TELEPHONE - SEPT 2011	101-371-850.000	83.00
		193609		TELEPHONE - SEPT 2011	101-441-850.000	524.38
		193609		TELEPHONE - SEPT 2011	101-449-850.000	204.83
		193609		SUPPLIES - ARCH	101-691-740.000-10018691	396.17
		193609		TELEPHONE - SEPT 2011	101-691-850.000	166.53
		193609		TELEPHONE - SEPT 2011	580-580-850.000	209.15

Check Date	Bank	Check #	Payee	Description	GL #	Amount
						4,105.59
10/06/2011	AP	193610	VILLAGE BIKE & FITNESS	SUPPLIES	101-691-740.000	97.00
10/06/2011	AP	193611	WASTE TRENDS	4561 52ND STREET SE	101-000-695.400	480.00
10/06/2011	AP	193612	WELLER TRUCK PARTS	AUTO SUPPLIES	101-336-861.000	480.70
10/06/2011	AP	193613	WEST MI TACTICAL OFFICER ASS	EXTTR - BASIC SNIPER COURSE	101-301-957.000-11507301	200.00
10/06/2011	AP	193614	WEST SHORE SERVICES	CIVIL DEFENSE	101-336-854.000	240.10
10/06/2011	AP	193615	WMCJTC	EXTTR - BASIC SWAT - (3)	101-301-957.000-11507301	450.00
10/06/2011	AP	193616	RON WOODS	SUPPLIES - SEPT 2011	101-441-740.000	6.00
		193616		TELEPHONE - SEPT 2011	101-441-850.000	(10.00)
		193616		VEHICLE MILEAGE - SEPT 2011	101-441-864.000	188.10
						<u>184.10</u>
10/06/2011	AP	193617	WYOMING-KENTWOOD AREA CHAMBE	EXPENSE- CLANTON	101-101-729.000	44.00
		193617		SUPPLIES - HOUTTEMAN	101-171-740.000	44.00
		193617		SUPPLIES - SANTA PARADE	101-691-740.000	10.00
						<u>98.00</u>
10/06/2011	AP	193618	YOUNG'S ARMY & NAVY SURPLUS	EDUCATION & TRAINING	101-301-956.000	30.00
10/06/2011	AP	193619	ALGER CYCLERY INC	BIKE	101-301-740.000-11501301	506.47
		193619		BIKE	101-301-743.000-11501301	350.71
						<u>857.18</u>
10/06/2011	AP	193620	MARCELO ARANDA	VEHICLE MILEAGE - JULY - SEPT 201	101-301-864.000	151.80
10/06/2011	AP	193621	JEFF AUGUSTYN	VEHICLE MILEAGE - JULY - SEPT 201	101-301-864.000	49.50
10/06/2011	AP	193622	DAVID BACHMAN	VEHICLE MILEAGE - JULY - SEPT 201	101-301-864.000	88.00
10/06/2011	AP	193623	JUSTIN BIERENS	VEHICLE MILEAGE - JULY - SEPT 201	101-301-864.000	39.60
10/06/2011	AP	193624	MICHAEL BOCKHEIM	VEHICLE MILEAGE - JULY - SEPT 201	101-301-864.000	52.80
10/06/2011	AP	193625	BRADLEY BOLT	VEHICLE MILEAGE - JULY - SEPT 201	101-301-864.000	22.00
10/06/2011	AP	193626	JONATHON CARTER	VEHICLE MILEAGE - JULY - SEPT 201	101-301-864.000	177.65
10/06/2011	AP	193627	DARRIN CLINE	VEHICLE MILEAGE - JULY - SEPT 201	101-301-864.000	128.70

Check Date	Bank	Check #	Payee	Description	GL #	Amount
10/06/2011	AP	193628	JAMES CONNELL	VEHICLE MILEAGE - JULY - SEPT 201	101-301-864.000	77.00
10/06/2011	AP	193629	ROBERT DECKER	VEHICLE MILEAGE - JULY - SEPT 201	101-301-864.000	253.00
10/06/2011	AP	193630	SEAN DEGROVE	VEHICLE MILEAGE - JULY - SEPT 201	101-301-864.000	19.80
10/06/2011	AP	193631	SCOTT DRUMM	VEHICLE MILEAGE - JULY - SEPT 201	101-301-864.000	4.40
10/06/2011	AP	193632	WILLIAM FREDERICK	VEHICLE MILEAGE - JULY - SEPT 201	101-301-864.000	37.95
10/06/2011	AP	193633	FUEL MANAGEMENT SYSTEM	GASOLINE EXP 7079	101-301-862.000	7,465.77
		193633		GASOLINE EXP 7076	101-336-862.000	1,830.86
		193633		GASOLINE EXP 7078	101-371-862.000	105.11
		193633		GASOLINE EXP 7077	101-441-862.000	4,017.06
		193633		GASOLINE EXP 9639	101-449-862.000	57.90
		193633		GASOLINE EXP 7080	101-691-862.000	66.43
						<hr/> 13,543.13
10/06/2011	AP	193634	DAVID GENRICH	VEHICLE MILEAGE - JULY - SEPT 201	101-301-864.000	33.00
10/06/2011	AP	193635	FAYE HARTMAN-GOEHRING	VEHICLE MILEAGE - JULY - SEPT 201	101-301-864.000	177.10
10/06/2011	AP	193636	AMOL HUPRIKAR	VEHICLE MILEAGE - JULY - SEPT 201	101-301-864.000	161.70
10/06/2011	AP	193637	GREGG ISENHOFF	VEHICLE MILEAGE - JULY - SEPT 201	101-301-864.000	16.50
10/06/2011	AP	193638	JENNIFER KALBFLEISCH	VEHICLE MILEAGE - JULY - SEPT 201	101-301-864.000	11.55
10/06/2011	AP	193639	CYNTHIA KEATON	VEHICLE MILEAGE - JULY - SEPT 201	101-301-864.000	27.50
10/06/2011	AP	193640	PETER LEACH	VEHICLE MILEAGE - JULY - SEPT 201	101-301-864.000	27.50
10/06/2011	AP	193641	BRYAN LITWIN	VEHICLE MILEAGE - JULY - SEPT 201	101-301-864.000	173.25
10/06/2011	AP	193642	KEVIN MANNING	VEHICLE MILEAGE - JULY - SEPT 201	101-301-864.000	19.80
10/06/2011	AP	193643	ERIN MC ALPINE	VEHICLE MILEAGE - JULY - SEPT 201	101-301-864.000	23.10
10/06/2011	AP	193644	JAMES MORNINGSTAR	VEHICLE MILEAGE - JULY - SEPT 201	101-301-864.000	62.70
10/06/2011	AP	193645	CHAD NAWROCKI	VEHICLE MILEAGE - JULY - SEPT 201	101-301-864.000	59.40
10/06/2011	AP	193646	TIMOTHY NELSON	VEHICLE MILEAGE - JULY - SEPT 201	101-301-864.000	38.50

Check Date	Bank	Check #	Payee	Description	GL #	Amount
10/06/2011	AP	193647	WILLIAM OLENZUK	VEHICLE MILEAGE - JULY - SEPT 201	101-301-864.000	39.60
10/06/2011	AP	193648	FRANCISCO PENA	VEHICLE MILEAGE - JULY - SEPT 201	101-301-864.000	75.90
10/06/2011	AP	193649	PHILLIP REININK	VEHICLE MILEAGE - JULY - SEPT 201	101-301-864.000	155.10
10/06/2011	AP	193650	RICHARD ROBERTS	VEHICLE MILEAGE - JULY - SEPT 201	101-301-864.000	34.65
10/06/2011	AP	193651	DAVID ROBERTSON	VEHICLE MILEAGE - JULY - SEPT 201	101-301-864.000	218.90
10/06/2011	AP	193652	PAUL SCHAAF	VEHICLE MILEAGE - JULY - SEPT 201	101-301-864.000	74.25
10/06/2011	AP	193653	JOHN SEGARD	VEHICLE MILEAGE - JULY - SEPT 201	101-301-864.000	18.70
10/06/2011	AP	193654	SEAN TANNER	VEHICLE MILEAGE - JULY - SEPT 201	101-301-864.000	66.00
10/06/2011	AP	193655	DONALD TUURI	VEHICLE MILEAGE - JULY - SEPT 201	101-301-864.000	25.30
10/06/2011	AP	193656	DAVID UNSELD	VEHICLE MILEAGE - JULY - SEPT 201	101-301-864.000	73.70
10/06/2011	AP	193657	RYAN VANDER VEEN	VEHICLE MILEAGE - JULY - SEPT 201	101-301-864.000	193.05
10/06/2011	AP	193658	CAL VOOGT	VEHICLE MILEAGE - JULY - SEPT 201	101-301-864.000	145.20
10/06/2011	AP	193659	DAN WILLS	VEHICLE MILEAGE - JULY - SEPT 201	101-301-864.000	22.00
10/07/2011	AP	193660	CARLA KANE	TELEPHONE JULY - OCT 2011	101-201-850.000	60.00
		193660		VEHICLE MILEAGE 9/22 - 10/6/11	101-201-864.000	166.10
		193660		MPPOA CONF EXPENSE 10/6/11	101-201-865.000	18.64
						<u>244.74</u>
10/07/2011	AP	193661	SAFETY PRODUCTS	SUPPLIES	101-441-740.000	738.79
10/13/2011	AP	193662	52ND STREET AUTOWASH	AUTO SUPPLIES - SEPT 2011	101-301-861.000	175.75
10/13/2011	AP	193663	A 1 ASPHALT SEALING & REPAIR	ASPHALT PAVING @ 5543 EDGELAWN	213-213-778.004	510.00
10/13/2011	AP	193664	AARP	DRIVER SAFETY PROG FALL 2011 (7)	101-691-740.000	84.00
10/13/2011	AP	193665	ACRAGRAPHICS	SUPPLIES	101-336-740.000	68.00
		193665		SUPPLIES	101-371-740.000	201.00
						<u>269.00</u>
10/13/2011	AP	193666	AD-AMERICA MARKETING GROUP	HOODED SWEATSHIRTS WITH SCREEN PR	101-691-740.000	536.48

Check Date	Bank	Check #	Payee	Description	GL #	Amount
10/13/2011	AP	193667	ALERT-ALL CORP	SUPPLIES	101-336-740.000	826.00
10/13/2011	AP	193668	AMERICAN HOTEL REGISTER CO	SUPPLIES	101-336-740.000	178.07
10/13/2011	AP	193669	ARROW UNIFORM	UNIFORM EXPENSE	101-371-743.000	28.04
		193669		UNIFORM EXPENSE	101-449-743.000	15.89
						43.93
10/13/2011	AP	193670	ARROWASTE INC	SUPPLIES - OCT 2011	101-101-777.000	136.50
		193670		SUPPLIES JC COURT - OCT 2011	101-136-740.136	64.58
		193670		SUPPLIES JC POLICE - OCT 2011	101-301-740.301	150.68
		193670		SUPPLIES - OCT 2011	101-336-740.000	222.60
		193670		SUPPLIES - OCT 2011	101-441-740.000	556.49
		193670		SUPPLIES - OCT 2011	101-691-740.000	136.50
		193670		SUPPLIES - OCT 2011	101-738-740.000	176.40
						1,443.75
10/13/2011	AP	193671	ASSET STRATEGIES PORTFOLIO S	CONTRACTUAL SERVICES - OCT 2011	101-101-801.000	1,222.23
		193671		PENSION PLAN ADMIN - OCT 2011	101-101-874.000	1,583.33
						2,805.56
10/13/2011	AP	193672	AT&T	616 R21 0009 786 8 - 10/1 - 10/3	101-101-850.000	7,641.83
		193672		616 532 7915 212 8 - 09/28 - 10/	101-441-850.000	18.93
		193672		906 R01 0563 739 2 - 10/1 - 10/3	590-590-850.000	383.65
						8,044.41
10/13/2011	AP	193673	JAMES BAKER	MAA CONFERENCE EDUC - BAKER	101-209-956.000	315.41
10/13/2011	AP	193674	REBECCA BARRENGER	SUPPLIES - ARCH	101-691-740.000-10018691	26.50
10/13/2011	AP	193675	SUE BARTHOLD	REIMB - LUNCH ART PRIZE TRIPS	101-691-740.000	15.04
10/13/2011	AP	193676	BASIC	MONTHLY FLEXPLAN ADMIN - OCT 2011	101-101-725.000	360.50
10/13/2011	AP	193677	BATTERIES PLUS	SUPPLIES	101-301-740.000	5.98
		193677		SUPPLIES	101-336-740.000	3.79
						9.77
10/13/2011	AP	193678	LORRAINE BELONCIS	MINI BUS TRIP - DAIRY FARM (10)	101-691-740.000	60.00
10/13/2011	AP	193679	BERGER CHEVROLET	AUTO SUPPLIES	101-441-861.000	204.40
10/13/2011	AP	193680	BOBCAT COMPANY	HYDRAULIC BREAKER WITH ACCESSORIE	640-640-975.000	7,843.97

Check Date	Bank	Check #	Payee	Description	GL #	Amount
10/13/2011	AP	193681	BRADLEY'S ACE HARDWARE	CASH DISCOUNTS	101-000-687.000	(0.44)
		193681		SUPPLIES	101-336-740.000	2.29
		193681		AUTO SUPPLIES	101-336-861.000	14.96
		193681		SUPPLIES	101-441-740.000	4.77
						21.58
10/13/2011	AP	193682	SHARON BRINKS	PARKING REIMB	101-101-729.000	5.55
10/13/2011	AP	193683	BYRON BANK	11037198 AFLAC POST PE 10/7/11	101-000-229.000	176.89
		193683		UNION DUES WHD PE 10/7/11	101-000-238.000	1,113.00
						1,289.89
10/13/2011	AP	193684	BYRON-GAINES UTILITY AUTHORI	SEWER SERVICES PURCH SEPT 2011	590-590-961.000	10,484.42
10/13/2011	AP	193685	CALEDONIA COMMUNITY SCHOOLS	TAX - S TAX 11	703-000-225.000	5,229.87
		193685		INTEREST - S TAX 11	703-000-226.000	44.85
						5,274.72
10/13/2011	AP	193686	CASCADE CEMENT CONTRACTING I	CONCRETE WORK	213-213-778.004	1,010.00
10/13/2011	AP	193687	CENTRAL INTERCONNECT	REPAIR	101-738-934.000	153.75
10/13/2011	AP	193688	CHAPTER 13 TRUST ACCOUNT	GARNISHMENT - PE 10/7/11	101-000-231.000	710.00
10/13/2011	AP	193689	CHAPTER 13 TRUST ACCOUNT	GARNISH PE 10/7/11	101-000-231.000	239.54
10/13/2011	AP	193690	TOM CHASE	REIMB LODGING - DUDGEON MI-GMIS	101-258-865.000	255.06
10/13/2011	AP	193691	CITY SERVICES INC	METER READING	580-580-801.000	1,120.30
10/13/2011	AP	193692	CKI, INC.	CORRECTIONS/ADDITIONS TO DONOR WA	453-453-975.675-09022738	2,920.00
10/13/2011	AP	193693	COMCAST	01720479151015 - 10/11 - 11/10	101-336-740.000	105.89
		193693		01720441656019 - 10/12 - 11/11	101-441-740.000	103.71
						209.60
10/13/2011	AP	193694	CONCRETE CENTRAL	FOREST HILL AVE RECONSTRUCTION	202-202-978.000-10029449	4,344.00
10/13/2011	AP	193695	CONSUMERS ENERGY	100000185247	101-336-920.000	2,852.15
		193695		100023381302	101-441-920.000	3,587.32
		193695		100025391192	101-691-920.000	1,148.07
		193695		100000130094	101-738-920.000	5,764.17
		193695		100039587868	202-202-778.001	36.26

Check Date	Bank	Check #	Payee	Description	GL #	Amount
		193695		100000348597	202-202-778.002	108.41
		193695		100000378503	219-219-920.000	41,767.45
		193695		100000185601	230-000-040.000	2,380.53
		193695		100021705742	580-580-920.000	408.45
		193695		100023227828	580-580-920.001	1,036.56
		193695		100024971614	590-590-920.000	93.78
						59,183.15
10/13/2011	AP	193696	CUSTER WORKPLACE INTERIORS	ROUND TABLE - 48" DIAMETER	453-453-975.739-09022738	2,947.63
10/13/2011	AP	193697	TIM DEITERS	REIMB - ARC FAULT TESTER	101-371-740.000	187.83
10/13/2011	AP	193698	DREW WIRELESS - ANDREW J FAL	FILTER ASSEMBLY INSTALLED	640-640-975.000	3,350.00
10/13/2011	AP	193699	DRUG SCREEN PLUS	CONTRACTUAL SERVICES	101-441-801.000	283.00
10/13/2011	AP	193700	DTE ENERGY	457351400074	101-136-921.000	819.74
		193700		457351400074	101-301-921.000	1,912.72
		193700		463556900017	101-441-921.000	50.85
		193700		457382600015	101-738-921.000	295.03
		193700		457353600077	580-580-921.000	65.37
						3,143.71
10/13/2011	AP	193701	ELITE BUILDING SERVICES	4900 BRETON (CITY HALL)	101-101-801.000	350.00
		193701		4740/4742 WALMA (JUSTICE)	101-136-740.136	135.00
		193701		4740/4742 WALMA (JUSTICE)	101-301-740.301	315.00
		193701		5068 BRETON (DPW)	101-441-801.000	100.00
		193701		355 48TH (REC CENTER)	101-691-801.000	40.00
		193701		EXTRA LIBRARY INTERIOR	101-738-801.000	960.00
						1,900.00
10/13/2011	AP	193702	ENGINEERING SUPPLY & IMAGING	OFFICE SUPPLIES	101-449-727.000	36.17
10/13/2011	AP	193703	ETNA SUPPLY	2" WATER METERS	580-000-152.002-11015580	5,020.00
		193703		REBUILD WATER METER, 1"	580-580-782.000-09023580	330.00
						5,350.00
10/13/2011	AP	193704	FASTENERS	AUTO SUPPLIES	101-441-861.000	89.00
10/13/2011	AP	193705	FIFTH THIRD BANK	PENSION PE 10/7/11	101-000-245.000	8,998.56
10/13/2011	AP	193706	FIRE FIGHTER SALES & SERVICE	AUTO SUPPLIES	101-336-861.000	30.00

Check Date	Bank	Check #	Payee	Description	GL #	Amount
10/13/2011	AP	193707	FOREST HILLS PUBLIC SCHOOLS	TAX - S TAX 11	703-000-225.000	2,969.98
		193707		INTEREST - S TAX 11	703-000-226.000	29.52
						2,999.50
10/13/2011	AP	193708	GODWIN HARDWARE & PLUMBING,	MAINTENANCE METERS WATER	580-580-782.000	26.04
10/13/2011	AP	193709	GORDON FOOD SERVICE	SUPPLIES	101-691-740.000	101.71
		193709		SUPPLIES - ARCH	101-691-740.000-10018691	165.17
						266.88
10/13/2011	AP	193710	GR CENTRAL IRON & STEEL	PARK MAINT SUPPLIES	101-441-740.208	100.50
10/13/2011	AP	193711	GRAND RAPIDS CITY TREASURER	PARKING - SEPT 2011	101-101-963.000	42.00
10/13/2011	AP	193712	GRAND RAPIDS COMMUNITY COLLE	TAX - S TAX 11	703-000-222.000	10,746.35
		193712		INTEREST - S TAX 11	703-000-226.000	105.34
						10,851.69
10/13/2011	AP	193713	GRAND VALLEY METRO COUNCIL	REGIS PAY AS YOU GO	101-101-801.000	243.75
10/13/2011	AP	193714	HANSEN TOWING, INC	TOWING SERVICE	101-301-740.000	80.00
10/13/2011	AP	193715	FAYE HARTMAN-GOEHRING	VOID CK#193635 REISSUE MILEAGE AD	101-301-864.000	127.05
10/13/2011	AP	193716	HAWORTH INC	WORKSTATION ADDITIONS	401-401-975.000	2,223.11
10/13/2011	AP	193717	BRIAN HEDBERG	EXTTR - HEDBERG	101-301-956.000-11507301	63.53
10/13/2011	AP	193718	HH ENGINEERING LTD	BRIDGE INSPECTION SERVICE	202-202-810.000	3,900.00
10/13/2011	AP	193719	JAN HOLLINRAKE	VEHICLE MILEAGE - MMTA CONFERENCE	101-253-864.000	268.40
		193719		CONFERENCE EXPENSE - MMTA	101-253-865.000	436.58
						704.98
10/13/2011	AP	193720	IN'T HOUT CONCRETE CONSTRUCT	SIDEWALK RAMP RPLCMNT PROJ 2010	203-203-778.449-10046449	22,967.88
10/13/2011	AP	193721	ING LIFE INSURANCE	DEFERRED COMP WHD PE 10/7/11	101-000-235.000	9,233.61
10/13/2011	AP	193722	INNOVATIVE DATA SOLUTIONS, I	ONLINE TRAINING (OLT)	101-301-850.000-10041301	15,550.00
10/13/2011	AP	193723	INTEGRITY TREE SERVICE	TWO ASH TREES ON JULIVAN AVENUE	203-203-778.001	3,100.00
10/13/2011	AP	193724	INTERNATIONAL RIGHT OF WAY A	DUES & SUBSCRIPTIONS	101-449-807.000	220.00

Check Date	Bank	Check #	Payee	Description	GL #	Amount
10/13/2011	AP	193725	INTERURBAN TRANSIT PARTNERSH	TAX - S TAX 11	703-000-222.000	7,759.73
		193725		INTEREST - S TAX 11	703-000-226.000	76.09
						7,835.82
10/13/2011	AP	193726	THE ISERV CO, LLC	TELEPHONE - NOV 2011	101-101-850.000	341.00
10/13/2011	AP	193727	ITE MICHIGAN	EDUC & TRAINING - KEPLEY, BRADSHA	202-202-956.000	70.00
10/13/2011	AP	193728	KELLOGGSVILLE PUBLIC SCHOOLS	TAX - S TAX 11	703-000-225.000	2,620.07
		193728		INTEREST - S TAX 11	703-000-226.000	26.30
						2,646.37
10/13/2011	AP	193729	KENOWA MUN FED CREDIT UNION	UNION -SGTS 47629-001 PE 10/7/11	101-000-238.000	250.00
		193729		UNION KGEA 33899-001 PE 10/7/11	101-000-241.000	240.00
						490.00
10/13/2011	AP	193730	KENT COMMUNICATIONS INC	POSTAGE - SEPT 2011	101-101-728.000	117.69
		193730		CONTRACTUAL SERVICES - SEPT 2011	101-101-801.000	42.00
						159.69
10/13/2011	AP	193731	KENT COUNTY REGISTER OF DEED	RECORD MORTGAGE - L. HITE	296-296-740.000	32.00
10/13/2011	AP	193732	KENT COUNTY ROAD COMMISSION	60TH & RIDGEBROOK DR SIGNAL	202-202-978.000	19,000.00
10/13/2011	AP	193733	KENT COUNTY TREASURER	REIMB K.C. TAXES REFUNDED MTT/STC	101-000-405.000	540.84
		193733		REIMB K.C. TAXES REFUNDED MTT/STC	101-000-407.000	3,078.20
		193733		REIMB K.C. TAXES REFUNDED MTT/STC	101-000-445.000	579.44
		193733		REIMB K.C. TAXES REFUNDED MTT/STC	205-000-407.000	5,343.85
		193733		REIMB K.C. TAXES REFUNDED MTT/ST	208-000-407.000	102.59
		193733		REIMB K.C. TAXES REFUNDED MTT/STC	271-000-407.000	359.77
						10,004.69
10/13/2011	AP	193734	KENT COUNTY TREASURER	TAX - S TAX 11	703-000-222.000	25,748.02
		193734		INTEREST - S TAX 11	703-000-226.000	252.41
						26,000.43
10/13/2011	AP	193735	KENT COUNTY TREASURER	INTEREST - S TAX 11	703-000-226.000	337.52
		193735		SET - S TAX 11	703-000-228.000	33,939.10
						34,276.62
10/13/2011	AP	193736	KENT COUNTY TREASURER	MOBILE HOME PRK FEES - SEPT 2011	101-000-222.000	443.50
		193736		MOBILE HOME PRK FEES-SET- 9/2011	101-000-225.000	1,774.00
						2,217.50

Check Date	Bank	Check #	Payee	Description	GL #	Amount
10/13/2011	AP	193737	KENT COUNTY TREASURER	MOBILE HOME PRK FEES - OCT 2011	101-000-222.000	448.50
		193737		MOBILE HOME PRK FEES-SET- 10/2011	101-000-225.000	1,794.00
						2,242.50
10/13/2011	AP	193738	KENT INTERMEDIATE SCHOOL DIS	TAX - S TAX 11	703-000-222.000	28,214.38
		193738		INTEREST - S TAX 11	703-000-226.000	276.60
						28,490.98
10/13/2011	AP	193739	KENTWOOD PUBLIC SCHOOLS	TAX - S TAX 11	703-000-225.000	38,813.62
		193739		INTEREST - S TAX 11	703-000-226.000	393.71
						39,207.33
10/13/2011	AP	193740	KENDALL KLINGELSMITH	TELEPHONE	101-691-850.000	(27.42)
		193740		VEHICLE MILEAGE - 7/1/11- 9/12/1	101-691-864.000	245.85
						218.43
10/13/2011	AP	193741	LAKE MICHIGAN CREDIT UNION	FIRE DUES-100011157845 PE 10/7/11	101-000-240.000	1,220.00
10/13/2011	AP	193742	LOWES HOME IMPROVEMENT	PARK MAINT SUPPLIES	101-441-740.208	28.35
		193742		SUPPLIES	101-738-740.000	52.90
						81.25
10/13/2011	AP	193743	LTAP MTU	EDUCATION & TRAINING - KEPLEY	202-202-956.000	75.00
10/13/2011	AP	193744	MARK'S BODY SHOP	AUTO SUPPLIES	101-336-861.000	95.00
10/13/2011	AP	193745	MED-1 BRETON	SUPPLIES - ARCH	101-691-740.000-10018691	130.00
10/13/2011	AP	193746	MED-1 LEONARD LLC	SUPPLIES - ARCH	101-691-740.000-10018691	65.00
10/13/2011	AP	193747	MENARDS-WYOMING	MAINT & REPAIR OTHER HP	580-580-784.001	9.88
10/13/2011	AP	193748	MISDU	WITHLD FOC PE 10/7/11	101-000-231.000	4,104.82
10/13/2011	AP	193749	MUNICIPAL CODE CORPORATION	CONTRACTUAL SERVICES	101-215-801.000	4,682.00
10/13/2011	AP	193750	NAPA AUTO PARTS	INVENTORY MTR POOL PARTS	101-000-114.000	35.98
		193750		CASH DISCOUNTS	101-000-687.000	(9.46)
		193750		AUTO SUPPLIES	101-336-861.000	11.70
		193750		AUTO SUPPLIES	101-441-861.000	425.52
						463.74
10/13/2011	AP	193751	NATIONWIDE RETIREMENT	DEFERRED COMP WHD PE 10/7/11	101-000-235.000	10,715.15

Check Date	Bank	Check #	Payee	Description	GL #	Amount
10/13/2011	AP	193752	NORTON, RICHARD	CREDIT FOR ASPHALT NOT USED	202-202-978.000-10029449	680.06
10/13/2011	AP	193753	OVERHEAD DOOR CO OF GR	REPAIR	101-336-934.000	808.70
		193753		SUPPLIES	101-441-740.000	124.43
						933.13
10/13/2011	AP	193754	PERFORMANCE EDGE LLC	EDUCATION & TRAINING	101-101-956.000	1,014.80
10/13/2011	AP	193755	RICHARDS SUPPLY	SUPPLIES	101-101-777.000	65.00
10/13/2011	AP	193756	DEBORAH RING	MAA CONFERENCE EDUC - RING	101-209-956.000	277.55
10/13/2011	AP	193757	RL DEPPMANN CO	SUPPLIES	101-101-777.000	400.50
10/13/2011	AP	193758	RONDA TRUCK CENTER	AUTO SUPPLIES	101-336-861.000	370.00
10/13/2011	AP	193759	SAFETY PRODUCTS	SUPPLIES	101-441-740.000	53.42
10/13/2011	AP	193760	PAUL SCHAAF	EXTTR - SCHAAF	101-301-956.000-11507301	58.73
10/13/2011	AP	193761	SELECT FASTENERS FAST	CAPITAL OUTLAY FROM DONATIONS-N L	453-453-975.675-09022738	35.89
10/13/2011	AP	193762	JOHN SEVENS PAINT & WALLPAPE	PAINT PROGRAM	296-296-740.003	32.70
10/13/2011	AP	193763	SHELDON CLEANERS	UNIFORM EXPENSE - SEPT 2011	101-301-743.000	1,247.15
		193763		UNIFORM EXPENSE - SEPT 2011	101-336-743.000	906.25
						2,153.40
10/13/2011	AP	193764	SHERMATA, ADAMS & VON ALLMEN	GARNISHMENT PE 10/7/11	101-000-231.000	724.31
10/13/2011	AP	193765	LISA SONEGO	WELLNESS PROJ - SEPT 2011	101-101-725.000-09001101	13.93
		193765		MAINTENANCE AGREEMENTS - 9/2011	101-101-941.000	(0.22)
		193765		TELEPHONE - SEPT 2011	101-226-850.000	68.84
		193765		VEHICLE MILEAGE - SEPT 2011	101-226-864.000	33.00
		193765		IMPELRA CONF 2011 - SONEGO	101-226-865.000	551.46
		193765		EDUCATION & TRAINING - SEPT 2011	101-226-956.000	25.00
						692.01
10/13/2011	AP	193766	SOS OFFICE SUPPLY	OFFICE SUPPLIES	101-101-727.000	59.71
		193766		SUPPLIES	101-201-740.000	31.77
		193766		OFFICE SUPPLIES	101-301-727.000	194.32
		193766		SUPPLIES	101-336-740.000	276.10
						561.90

Check Date	Bank	Check #	Payee	Description	GL #	Amount
10/13/2011	AP	193767	SPARTAN STORES LLC	SUPPLIES - ARCH	101-691-740.000-10018691	56.49
10/13/2011	AP	193768	SPICER GROUP	2010 WETLAND MITIGATION ASSIST	202-202-810.000	5,123.75
10/13/2011	AP	193769	STATE OF MICHIGAN	PLATE TABS FOR DB CARS	101-301-740.000	208.00
10/13/2011	AP	193770	STATE OF MICHIGAN	POLICE - LIVESCAN FEES - SEPT 201	101-000-630.006	6,599.50
10/13/2011	AP	193771	STATE OF MICHIGAN	FOREST HILL AVE RECONSTRUCTION	202-202-978.000-10029449	725,832.69
10/13/2011	AP	193772	STATE WIRE & TERMINAL	INVENTORY MTR POOL PARTS	101-000-114.000	82.96
		193772		AUTO SUPPLIES	101-441-861.000	41.51
						<u>124.47</u>
10/13/2011	AP	193773	STRAWSER CONSTRUCTION INC	ROAD SURFACE MAINT 2011	202-202-778.001-12002449	40,800.50
		193773		ROAD SURFACE MAINT 2011	203-203-778.001-12002449	661,321.90
						<u>702,122.40</u>
10/13/2011	AP	193774	TELE-RAD INC	REPAIR	101-336-934.000	109.50
10/13/2011	AP	193775	TIME EMERGENCY EQUIPMENT	UNIFORM EXPENSE	101-335-743.000	875.95
		193775		SUPPLIES	101-336-740.000	103.34
		193775		UNIFORM EXPENSE	101-336-743.000	1,391.33
						<u>2,370.62</u>
10/13/2011	AP	193776	HEART OF WEST MI UNITED WAY	UNITED WAY WITHHOLDING PE 10/7/11	101-000-236.000	96.00
10/13/2011	AP	193777	URS CORP	FOREST HILL AVE RECONSTRUCTION	202-202-810.000-10029449	56,885.35
10/13/2011	AP	193778	ROBERT VAN WOERKOM	TRUCK SEAT TRUCK #10	101-441-861.000	125.00
10/13/2011	AP	193779	VESCO OIL CORPORATION	AUTO SUPPLIES	101-441-861.000	154.78
10/13/2011	AP	193780	WASHINGTON NATIONAL INSURANC	WHD PE 10/7/11	101-000-229.000	73.87
10/13/2011	AP	193781	WINDEMULLER ELECTRIC INC	PARK MAINT SUPPLIES	101-441-740.208	449.39
10/13/2011	AP	193782	WOLVERINE BUILDING INC	ADDITIONAL INSURANCE - NEW LIB	453-453-801.000-09022738	3,715.00
10/13/2011	AP	193783	CITY OF WYOMING	SEWER SERVICES PURCH SEPT 2011	590-590-961.000	167,843.25
10/13/2011	AP	193784	WYOMING-KENTWOOD AREA CHAMBE	B2B EXPO - KLINGELSMITH	101-691-740.000	100.00
10/13/2011	AP	193785	YELLOW ROSE TRANSPORT INC	H-1 LIMESTONE	202-202-778.001	497.42
		193785		H-1 LIMESTONE	203-203-778.001	497.42

Check Date	Bank	Check #	Payee	Description	GL #	Amount
						994.84
10/13/2011	AP	193786	CHARLIE ZIESEMER	VEHICLE MILEAGE - SEPT 2011	101-691-864.000	111.65
		193786		MRPA DIRECTOR SUMMIT - ZIESEMER	101-691-865.000	127.74
						239.39
				TOTAL OF 269 CHECKS		2,558,935.83
--- GL TOTALS ---						
		101-000-114.000	INVENTORY MTR POOL PARTS	118.94		
		101-000-216.327	ESC-ST TREE BND WOODBURY	370.00		
		101-000-222.000	DUE TO COUNTY	892.00		
		101-000-225.000	DUE TO SCHOOLS	3,568.00		
		101-000-229.000	ACCIDENT/DISABILITY INS	250.76		
		101-000-231.000	WITHHOLDING FOC/GARNISH	5,778.67		
		101-000-235.000	DEFERRED COMP WHD	19,948.76		
		101-000-236.000	UNITED WAY WITHHOLDING	96.00		
		101-000-238.000	UNION DUES WHD -POLICE	1,363.00		
		101-000-240.000	UNION DUES WHD FIRE	1,220.00		
		101-000-241.000	UNION DUES WHD KGEA	240.00		
		101-000-245.000	PENSION WITHHOLDING	8,998.56		
		101-000-405.000	ADMINISTRATIVE FEES	540.84		
		101-000-407.000	DELINQUENT PROPERTY TAX	3,078.20		
		101-000-445.000	PENALTIES & INTEREST-TAX	579.44		
		101-000-612.000	RECREATION FEES	103.00		
		101-000-630.006	POLICE - FINGER PRINTS	6,599.50		
		101-000-687.000	CASH DISCOUNTS	(10.35)		
		101-000-695.400	OTHER REVENUE-PLANNING	480.00		
		101-101-725.000	OTHER EMPLOYEE BENEFITS	360.50		
		101-101-725.000-09001101	OTHER EMPLOYEE BENEFITS		13.93	
		101-101-727.000	OFFICE SUPPLIES	269.37		
		101-101-728.000	POSTAGE	2,117.69		
		101-101-729.000	EXPENSE-CITY COMMISSION	114.50		
		101-101-777.000	SUPPLIES	1,067.40		
		101-101-801.000	CONTRACTUAL SERVICES	1,857.98		
		101-101-850.000	TELEPHONE	8,027.79		
		101-101-874.000	PENSION PLAN ADMIN	1,583.33		
		101-101-900.000	PRINTING & PUBLISHING	820.00		
		101-101-920.000	ELECTRIC	5,302.32		
		101-101-921.000	HEAT	137.70		
		101-101-941.000	MAINTENANCE AGREEMENTS	(2.00)		
		101-101-956.000	EDUCATION & TRAINING	1,014.80		
		101-101-963.000	OTHER EXPENSES	42.00		
		101-136-740.000	SUPPLIES	110.00		
		101-136-740.136	SUPPLIES JC COURT	371.33		
		101-136-801.000	CONTRACTUAL SERVICES	650.25		
		101-136-920.000	ELECTRIC	3,229.60		
		101-136-921.000	HEAT	819.74		
		101-171-740.000	SUPPLIES	44.00		

Check Date	Bank	Check #	Payee	Description	GL #	Amount
101-171-850.000			TELEPHONE			113.96
101-201-740.000			SUPPLIES			215.95
101-201-850.000			TELEPHONE			69.82
101-201-864.000			VEHICLE MILEAGE			189.92
101-201-865.000			CONFERENCE EXPENSE			18.64
101-209-956.000			EDUCATION & TRAINING			592.96
101-215-801.000			CONTRACTUAL SERVICES			4,682.00
101-226-850.000			TELEPHONE			68.84
101-226-864.000			VEHICLE MILEAGE			33.00
101-226-865.000			CONFERENCE EXPENSE			551.46
101-226-956.000			EDUCATION & TRAINING			25.00
101-253-740.000			SUPPLIES			69.10
101-253-864.000			VEHICLE MILEAGE			268.40
101-253-865.000			CONFERENCE EXPENSE			436.58
101-258-740.000			SUPPLIES			53.80
101-258-850.000			TELEPHONE			1,499.39
101-258-864.000			VEHICLE MILEAGE			276.87
101-258-865.000			CONFERENCE EXPENSE			391.45
101-301-727.000			OFFICE SUPPLIES			441.65
101-301-740.000			SUPPLIES			372.98
101-301-740.000-11501301			SUPPLIES			506.47
101-301-740.000-11508301			SUPPLIES			56.28
101-301-740.301			SUPPLIES JC POLICE			866.43
101-301-743.000			UNIFORM EXPENSE			1,247.15
101-301-743.000-11501301			UNIFORM EXPENSE			350.71
101-301-850.000			TELEPHONE			748.88
101-301-850.000-10041301			TELEPHONE			15,550.00
101-301-861.000			AUTO SUPPLIES			1,501.38
101-301-862.000			GASOLINE EXPENSE			7,465.77
101-301-864.000			VEHICLE MILEAGE			3,203.20
101-301-920.000			ELECTRIC			7,535.71
101-301-921.000			HEAT			1,912.72
101-301-941.000			MAINTENANCE AGREEMENTS			985.00
101-301-956.000			EDUCATION & TRAINING			30.00
101-301-956.000-11507301			EDUCATION & TRAINING			510.16
101-301-957.000-11507301			EDUC & TRAINING ST POLICE			650.00
101-335-743.000			UNIFORM EXPENSE			875.95
101-336-740.000			SUPPLIES			3,466.32
101-336-743.000			UNIFORM EXPENSE			2,347.58
101-336-850.000			TELEPHONE			261.86
101-336-854.000			CIVIL DEFENSE			240.10
101-336-861.000			AUTO SUPPLIES			1,474.43
101-336-862.000			GASOLINE EXPENSE			1,830.86
101-336-920.000			ELECTRIC			2,852.15
101-336-921.000			HEAT			848.32
101-336-934.000			REPAIR			2,487.05
101-336-975.000			CAPITAL OUTLAY			762.16
101-371-740.000			SUPPLIES			392.45

Check Date	Bank	Check #	Payee	Description	GL #	Amount
101-371-743.000				UNIFORM EXPENSE		56.08
101-371-850.000				TELEPHONE		83.00
101-371-862.000				GASOLINE EXPENSE		105.11
101-400-864.000				VEHICLE MILEAGE		19.25
101-400-865.000				CONFERENCE EXPENSE		995.00
101-441-740.000				SUPPLIES		1,797.20
101-441-740.208				PARK MAINT SUPPLIES		598.61
101-441-740.691				SPORTS FIELD SUPPLIES		461.76
101-441-743.000				UNIFORM EXPENSE		155.00
101-441-801.000				CONTRACTUAL SERVICES		383.00
101-441-850.000				TELEPHONE		533.31
101-441-861.000				AUTO SUPPLIES		1,119.21
101-441-862.000				GASOLINE EXPENSE		4,017.06
101-441-864.000				VEHICLE MILEAGE		385.01
101-441-920.000				ELECTRIC		3,618.29
101-441-921.000				HEAT		823.11
101-449-727.000				OFFICE SUPPLIES		36.17
101-449-740.000				SUPPLIES		132.18
101-449-743.000				UNIFORM EXPENSE		31.78
101-449-807.000				DUES & SUBSCRIPTIONS		220.00
101-449-850.000				TELEPHONE		184.83
101-449-862.000				GASOLINE EXPENSE		57.90
101-449-864.000				VEHICLE MILEAGE		496.65
101-691-740.000				SUPPLIES		2,007.61
101-691-740.000-10018691				SUPPLIES		847.31
101-691-801.000				CONTRACTUAL SERVICES		1,975.00
101-691-850.000				TELEPHONE		139.11
101-691-862.000				GASOLINE EXPENSE		66.43
101-691-864.000				VEHICLE MILEAGE		396.00
101-691-864.000-10018691				VEHICLE MILEAGE		146.30
101-691-865.000				CONFERENCE EXPENSE		127.74
101-691-920.000				ELECTRIC		1,148.07
101-691-921.000				HEAT		54.03
101-738-740.000				SUPPLIES		631.91
101-738-801.000				CONTRACTUAL SERVICES		4,442.50
101-738-850.000				TELEPHONE		555.36
101-738-920.000				ELECTRIC		5,764.17
101-738-921.000				HEAT		295.03
101-738-934.000				REPAIR		153.75
202-202-778.001				MAINTENANCE ROAD & STREET		2,323.68
202-202-778.001-12002449				MAINTENANCE ROAD & STREET		152,391.36
202-202-778.002				MAINTENACE TRAFFIC		125.61
202-202-810.000				ENGINEERING SERVICES		9,023.75
202-202-810.000-10029449				ENGINEERING SERVICES		56,885.35
202-202-956.000				EDUCATION & TRAINING		145.00
202-202-963.000				OTHER EXPENSES		20.00
202-202-978.000				CONSTRUCTION		19,000.00
202-202-978.000-10029449				CONSTRUCTION		730,856.75

User: smithpy  
DB: Kentwood

CHECK DATE FROM 09/30/2011 - 10/13/2011

Check Date	Bank	Check #	Payee	Description	GL #	Amount
203-203-778.001			MAINTENANCE ROAD & STREET			3,597.42
203-203-778.001-12002449			MAINTENANCE ROAD & STREET			918,067.90
203-203-778.449-10046449			SIDEWALK REPAIR			22,967.88
205-000-407.000			DELINQUENT PROPERTY TAX			5,343.85
208-000-407.000			DELINQUENT PROPERTY TAX			102.59
208-208-975.000-10031691			CAPITAL OUTLAY			523.30
208-208-975.000-11011691			CAPITAL OUTLAY			229.87
213-213-778.004			MAINTENANCE DRAINS			11,696.92
219-219-920.000			ELECTRIC			41,767.45
230-000-040.000			ACCOUNTS RECEIVABLE			2,380.53
230-230-975.001			LANDFILL CLEANUP EXPENSE			7,762.84
271-000-407.000			DELINQUENT PROPERTY TAX			359.77
296-000-206.000			PAYABLES YEAR END			9,828.04
296-296-740.000			SUPPLIES			32.00
296-296-740.003			PAINT PROGRAM			65.40
401-401-975.000			CAPITAL OUTLAY			2,223.11
453-453-801.000-09022738			CONTRACTUAL SERVICES			3,715.00
453-453-975.675-09022738			CAPITAL OUTLAY FROM DONATIONS			2,955.89
453-453-975.739-09022738			CAP OUTLAY-FURNITURE			2,947.63
580-000-040.000			ACCOUNTS RECEIVABLE			25.06
580-000-152.002-11015580			METERS			5,020.00
580-580-727.000			OFFICE SUPPLIES			16.16
580-580-740.000			SUPPLIES			75.00
580-580-782.000			MAINTENANCE METERS WATER			26.04
580-580-782.000-09023580			MAINTENANCE METERS WATER			330.00
580-580-784.000			MAINT & REPAIR OTHER			1,350.00
580-580-784.001			MAINT & REPAIR OTHER HP			9.88
580-580-801.000			CONTRACTUAL SERVICES			1,120.30
580-580-850.000			TELEPHONE			209.15
580-580-920.000			ELECTRIC			6,073.82
580-580-920.001			ELECTRIC-HP			1,036.56
580-580-921.000			HEAT			65.37
580-580-921.001			HEAT-HP			50.00
590-000-040.000			ACCOUNTS RECEIVABLE			32.67
590-590-727.000			OFFICE SUPPLIES			16.16
590-590-850.000			TELEPHONE			383.65
590-590-920.000			ELECTRIC			93.78
590-590-961.000			SEWER SERVICES PURCHASED			178,327.67
640-640-975.000			CAPITAL OUTLAY			11,193.97
703-000-222.000			DUE TO COUNTY			72,468.48
703-000-225.000			DUE TO SCHOOLS			49,633.54
703-000-226.000			DUE TO CITY			1,542.34
703-000-228.000			DUE TO SET			33,939.10

**PROPOSED MINUTES OF THE REGULAR MEETING  
OF THE KENTWOOD CITY COMMISSION  
HELD OCTOBER 4, 2011**

Mayor Richard Root called the meeting to order at 7:00 P.M.

Reverend Jerry DeRuiter of Kentwood Community Church gave the invocation.

Commissioner Brown led the Pledge of Allegiance to the Flag.

Roll Call: Present: Commissioners: Sharon R. Brinks, Michael W. Brown, Robert Coughlin, Frank Cummings, Raymond VerWys and Mayor Richard Root.

Motion by Cummings, supported by Coughlin, to excuse Commissioner Clanton with prior notification.

Motion Carried.

Staff Present: Deputy City Clerk Mary Bremer, Economic Development Planner Lisa Golder, Deputy Administrator Rich Houtteman, Police Chief Rick Mattice, Assistant Finance Director Lorna Nenciarini, Community Development Director Terry Schweitzer, Fire Department Administrative Assistant Nancy Shane and Public Works Director Ron Woods.

Four (4) citizens and members of the news media attended the meeting.

Motion by Brown, supported by Cummings, to **approve the agenda**.

Motion Carried.

**ACKNOWLEDGE VISITORS AND NON-AGENDA ITEMS:**

John Helder, Planning Commissioner and resident at the Holland Home complex, thanked Mayor Root for an informative meeting he held with the residents of the Holland Home complex.

**CONSENT AGENDA:**

Motion by VerWys, supported by Cummings, to approve the Consent Agenda as follows:

- A. Receive and file minutes of the Service Committee Meeting held on September 20, 2011.
- B. Denial of Larry DeHaan's request for a reduction of fees associated with hook-up to sanitary sewer at 5545 Kalamazoo Ave., SE. (Service Comm.)
- C. Receive and file minutes of the Finance Committee Meeting held on September 20, 2011.

- D. Receive and file minutes of the Safety Committee Meeting held on September 20, 2011.
- E. Approve Traffic Control Order #480 to install NO PARKING signs on both sides of South Grove Drive from 60<sup>th</sup> Street north to circle (West Grove Dr./East Grove Dr.). (Safety Comm.)
- F. Authorize the purchase of two multi-function copiers in a total amount not to exceed \$21,644.00 from Ikon Office Solutions with funds from the FY 2011-2012 Property and Building and Police Equipment Fund budgets. (Finance Comm.)
- G. Authorize the Mayor to enter into a contract with AT&T for web filtering services at a total three-year amount not to exceed \$15,100.00 with current year funding from the network upgrade allocation in the FY 2011-2012 Property & Building, Police Equipment and Fire Equipment Fund budgets. Future years will be funded from the General Fund – Information Services Budget, subject to City Commission adoption of future budgets. (Finance Comm.)
- H. Payables for the City totaling \$1,441,578.94 .

Roll Call Vote: Yeas: All. Nays: None. Absent: Clanton.

Motion Carried.

Motion by Coughlin, supported by Brown, to **approve the minutes** of the September 20, 2011 City Commission Meeting.

Motion Carried.

**COMMUNICATIONS AND PETITIONS:**

**MEMO OF UNDERSTANDING WITH GRAND RAPIDS AND WYOMING FOR STUDY OF POLICE AND FIRE SERVICES AND WORKLOADS.**

Deputy Administrator Rich Houtteman reviewed the memorandum of October 4, 2011 and Mayor Root described that the ICMA will provide answers to the many questions and concerns being discussed by these municipalities in two phases – Phase I is the analysis portion and Phase II will be recommendations based on that analysis. Mayor Root emphasized that the Commission will be kept informed on the process.

Motion by Brinks, supported by Cummings, to authorize the Mayor to sign a Memorandum of Understanding with Grand Rapids and Wyoming to jointly receive grant funds and expend with separately budgeted funds for the purpose of studying staffing and deployment for Police and Fire calls for service and workloads.

Motion Carried.

Motion by Brinks, supported by VerWys, to authorize the Mayor to sign an agreement to expend funds not to exceed \$42,000.00 (proposed fee plus travel) for Phases I and II of

City Commission Meeting  
October 4, 2011

the ICMA study with funds from the FY 2011 Mayor's Office Contractual budget subject to City Attorney approval.

Motion Carried.

**REPAIRS TO THE PARIS DRAIN.**

Public Works Director Ron Woods reviewed his memo dated September 29, 2011.

Motion by Brinks, supported by Cummings, to approve an invoice of \$11,149.81 to the Kent County Drain Commission for repairs to the Paris Drain at 44<sup>th</sup> Street and Kalamazoo Avenue on Kentwood Public Schools property.

Motion Carried.

**RESOLUTIONS:**

**ADOPT RESOLUTIONS #80-11 AND #81-11 TO AMEND CONSUMERS ENERGY STANDARD STREETLIGHTING CONTRACT.**

After a brief review by Public Works Director Ron Woods:

Motion by Coughlin, supported by VerWys, to adopt Resolution #80-11 to amend the Consumers Energy Standard Streetlight Contract to change twelve (12) existing street lights from 100 watt lights to 250 watt lights and place on 12 foot brackets instead of 6 foot brackets in the Ridgebrook area.

Roll Call Vote: Yeas: All. Nays: None. Absent: Clanton

Resolution Adopted.

Motion by VerWys, supported by Coughlin, to adopt Resolution #81-11 to amend the Consumers Energy Standard Streetlight Contract to install three (3) additional 250 watt lights in the Ridgebrook area.

Roll Call Vote: Yeas: All. Nays: None. Absent: Clanton

Resolution Adopted.

**COMMENTS OF COMMISSIONERS, STAFF AND MAYOR:**

Mayor Root and Public Works Director Woods - Snowplow Rodeo will be held on October 12<sup>th</sup> and encouraged the Commissioners to attend.

Mayor Root – Michigan Municipal League will meet in Grand Rapids this week. Economic Development Planner Lisa Golder reported to the Commission that Pureflex will be requesting a plant rehabilitation district for the former MacDonald's

City Commission Meeting  
October 4, 2011

Industrial Products facility located at 4242 – 44<sup>th</sup> St., SE and will attend the October 18<sup>th</sup> Commission meeting.

Commissioner Brinks – Reported that the Land Bank Committee will announce a director soon.

Mayor Root – Reported that the Department of Public Works second shift personnel will be generating a list of street lights that need replacing/repair. If anyone else gets a call, please be sure to get a street address to assist Consumers Energy in this process.

The meeting was adjourned at 7:45 PM.

Mary Bremer  
Deputy City Clerk

Richard L. Root  
Mayor

October 11, 2011

MEMO TO: Mayor Root and the Kentwood City Commission  
FROM: Lisa Golder, Economic Development Planner  
RE: Tax Abatement Application for Lacks Exterior Trim Systems, 4260 Air Lane SE

Lacks Exterior Trim Systems at 4260 Air Lane Drive SE is scheduled for a public hearing on October 18<sup>th</sup> to consider approval of an Industrial Development District and Industrial Facilities Exemption Certificate for a project related to the purchase of \$1,400,000 in machinery and equipment. It has come to my attention that a tax abatement for this equipment is ineligible due to the fact that Lacks has installed equipment prior to making application or submitting a letter requesting the establishment of an Industrial Development District.

The application is therefore requested to be withdrawn from consideration.

October 10, 2011

MEMO TO: Mayor Root and the Kentwood City Commission  
FROM: Lisa Golder, Economic Development Planner  
RE: Plant Rehabilitation Certificate for Pureflex, Inc.

Attached please find resolutions to approve a Plant Rehabilitation District and Industrial Facilities Exemption Certificate for a Rehabilitation Facility for Pureflex, Inc. under Public Act 198. Pureflex has purchased a vacant industrial facility formerly occupied by MacDonald's Industrial Products. The facility has been vacant many years, was vandalized, and has environmental contamination caused by the former metal plating use. The new owners of the building have made application to make application for a Plant Rehabilitation District and Industrial Facilities Exemption Certificate for a Rehabilitation Facility under Public Act 198

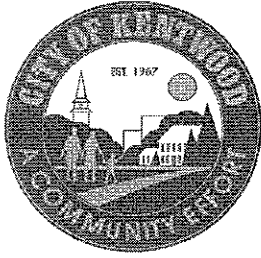
A Certificate for a rehab facility differs from other tax abatements under Public Act 198 in that it is designed for rehabilitation projects, and requires a finding that 50% or more of the industrial property within the district is obsolete. This finding is indicated in the attached memo by City Assessor Deborah Ring.

The benefit from the rehabilitation certificate is that the IFT is based on the assessed value of the plant frozen at the level that was in effect prior to the improvements to the property. In this case, the assessed value of the building would be frozen at the 2011 level for up to 12 years, despite the fact that at least \$1,875,000 in building improvements are to be made to the property.

The applicant has indicated that 12-20 new jobs would be created as a result of the project, and are primarily unskilled jobs, but do include benefits.

The Commission can offer up to 12 years for the rehabilitation certificate. I recommend that the Industrial Facilities Certificate is approved for a period of eight (8) years.

Deborah Ring, Kentwood City Assessor will be available to answer any questions you have regarding the Plant Rehabilitation District and Certificate, as well as any questions regarding the determination of obsolescence



October 12, 2011

To: Mayor Richard Root and City Commissioners  
From: Deborah K. Ring, Assessor  
Re: 4242 44<sup>th</sup> Street SE

I had the opportunity to tour this building on January 17, 2011 for the purpose of setting the 2011 assessed value for parcel 41-18-25-126-008. This building was occupied for many years by MacDonald Industries. Construction of the building occurred in many phases beginning in 1967 with the last addition constructed in 1997. After nine separate construction projects for this one building, there is a substantial amount of functional obsolescence evidenced by partitioning within the building areas. Along the west wall there is a series of overhead doors which are not accessible by trucks as the lot line is approximately thirty feet or less from the doors. They may have functioned for ventilation by the prior owner, but would not be considered an asset with the heat loss in winter. Additional functional obsolescence is present in the plating solution pits and machinery foundations in the rear southwest portion of the building. These will require both remediation of reported contamination and restoration of a level floor in these areas. At the time of my inspection, the pits contained water. The stigma of water or ground contamination is another source of functional obsolescence in a property such as this one. There is a pole building of 7,680 square feet which had been used by the previous occupant/owner. This is not considered to contribute to the value of the property.

*Functional obsolescence* is defined as a loss in value due to the inability of a property to perform the function for which it is designed. This is strictly due to the building's design, materials, construction, etc. This building is classified as an industrial manufacturing building. The issues above reduce the functionality of the property for the general manufacturing tenant. *External obsolescence* is the loss in value due to factors outside of the property. These may include economic conditions as well as proximity to undesirable neighbors or other environmental issues. This obsolescence may affect both land and building. For consideration for a rehabilitation tax abatement, the external obsolescence of this building stems from the economic downturns experienced both locally and nationally within the past several years.

For a property to qualify for a Rehabilitation Certificate under P.A. 198 of 1974 our City Commission must make a finding that the property suffers from obsolescence as stated in the statute:

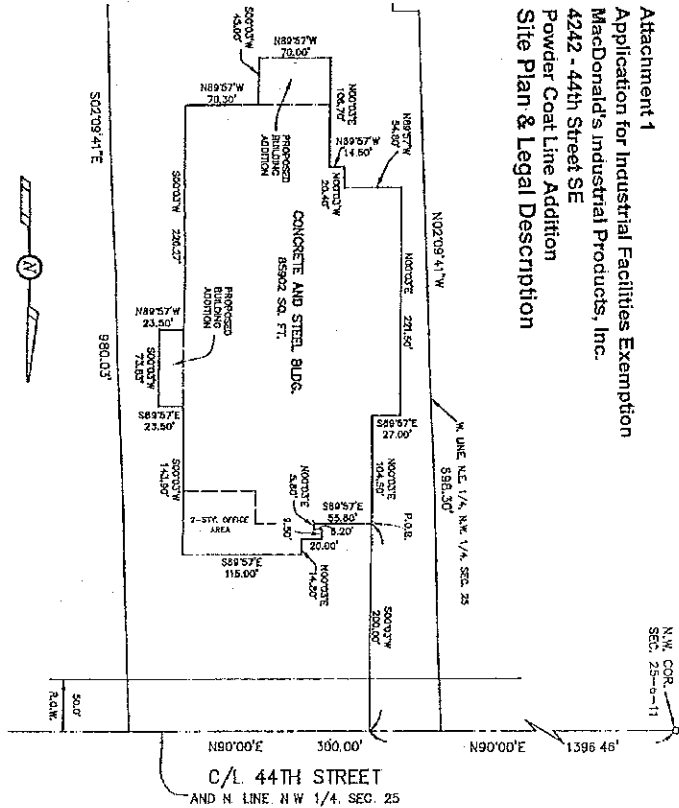
“(5) The legislative body of the local governmental unit, in its resolution establishing a plant rehabilitation district, shall set forth a finding and determination that property comprising not less than 50% of the state equalized valuation of the industrial property within the district is obsolete.”

To assist with this finding, I offer my opinion that this property qualifies and these facts support this finding:

1. In late 2007 the property was listed by S.J. Wisinski for \$2,495,000. The listing commented that the building had heavy power and air make-up systems, and a high-quality two story office environment as features to attract a buyer. For 2007 the true cash value determined by my office had been \$2,534,250.
2. MacDonald's vacated the building during 2006. The building sat unoccupied for many years which resulted in physical deterioration both from the elements as well as vandals.
3. Economic conditions resulted in the loss in value for industrial buildings as a class in this area. This obsolescence has been reflected in decreases in values through the last several tax years:
  - a. Loss was taken beginning in 2007 in the amount of \$217,100 due to functional obsolescence along with physical deterioration.
  - b. An additional amount was deducted for tax year 2010 in the amount of \$249,700.
  - c. For 2011, an additional \$83,800 was taken as loss due to obsolescence.
  - d. Through this period the land value was determined to be \$593,640 for tax year 2007, increasing eventually to \$698,400 for the years 2009 through 2011.
  - e. The true cash value the building contributed to the total property value declined through the period as follows (from City records):
    - 2006: \$2,313,737
    - 2007: \$1,940,610
    - 2008: \$1,932,597
    - 2009: \$2,053,670
    - 2010: \$1,427,200
    - 2011: \$ 629,400
  - f. In the six years above, the building value was reduced **72.8%** due to the combination of obsolescence and physical deterioration due to vandalism.

Attachments: Survey sketch (1998), building sketch with dates of additions, and listing sheet (2007).

**Attachment 1**  
**Application for Industrial Facilities Exemption**  
**MacDonald's Industrial Products, Inc.**  
**4242 - 44th Street SE**  
**Powder Coat Line Addition**  
**Site Plan & Legal Description**



- Scale 1" = 100'
- D = Deeded dimension
  - M = Proposed dimension
  - P = Placed dimension
  - = Set iron stake
  - = Found iron stake
  - ⊗ = Concrete monument
  - X- Fence Line

Description & Sketch for:  
 Statelex Systems  
 ATTN: Roberts Hadley  
 678 Front, N.W. - Suite 280  
 Grand Rapids, MI 49504

Description of Building Area for Tax Abatement Purposes:  
 That part of the NW 1/4, Section 25, T8N, R11W, City of Kentwood, Kent County, Michigan, described as: Commencing at the NW corner of Section 25; thence N89°00'E 1396.46 feet along the North line of Section 25; thence S00°03'W 200.00 feet to the PLACE OF BEGINNING; thence S89°57'E 55.80 feet; thence N00°03'E 5.60 feet; thence N89°57'W 8.20 feet; thence N00°03'E 9.50 feet; thence S89°57'E 20.00 feet; thence N00°03'E 14.80 feet; thence S89°57'E 145.00 feet; thence S00°03'W 143.80 feet; thence N89°57'W 23.50 feet; thence S00°03'W 73.83 feet; thence N89°57'W 70.30 feet; thence S00°03'W 45.00 feet; thence N89°57'W 70.00 feet; thence N00°03'E 106.70 feet; thence N89°57'W 14.50 feet; thence N00°03'E 20.40 feet; thence N89°57'W 54.80 feet; thence N00°03'E 221.50 feet; thence S89°57'W 27.00 feet; thence N00°03'E 104.50 feet to the place of beginning. This area contains 85,902 square feet = 1.972 acres.

RE: MacDonald's Ind. Products, Inc.

**exxel engineering inc.**  
 5532 CUYDE PARK, S.W. • GRAND RAPIDS, MI 49509-9724  
 PHONE (616) 531-3660  
 File No.: 982729 Date: October 6, 1998

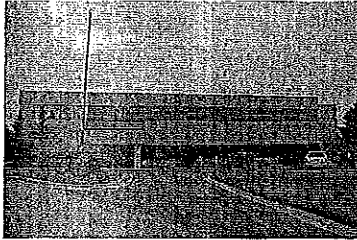


41-18-25-126-008

MLS: 367079

C/I Purchase

\$ 2,495,000



Property Type: **Industrial**

Address: **4242 44TH ST SE**

Zip Code: **49512-**

County: **Kent**

Zoning: **I-1, LIGHT INDUSTRIAL**

Lot Size: **300X1,324 23**

Directions: **S side of 44th St, just E of Broadmoor.**

Info Package Avail: **Yes**

Engineer Rep. Avail: **No**

Available for Lease: **No**

Utilities Attached: **Natrl\_Gas, Elec\_Under, City\_Sewer, City\_Water, Strm\_Sewer, Tele\_Under**

Utilities Available:

Features Included: **Phone System, Floor-Carpet, Floor-Concrete, Power >400 amp, Crane(s) 1-5 ton, Floor Drains**

Features Available: **Listing Package**

UnderStructure:

Terms Offered: **Cash**

Potential Uses: **Industrial**

Present Use: **INDUSTRIAL**

Type of Industry:

Building SqFt: **96578**

Age: **1983**

Traffic Count: **Major Artery**

Security System: **Yes**

Office SqFt: **14160**

Stories: **2**

Fuel/Heat: **GAS/FA**

% Air Cond: **15**

Retail SqFt: **0**

Ceiling Height: **8 0 to 26 0**

Load Docks: **8**

Number Elevators: **0**

W/H-Mfg SqFt: **82418**

Bldg Expandable: **Yes**

Drive-In Doors: **3**

RR Siding: **N**

Poss Exp Size: **0**

Sprinklered: **Yes**

Off Street Parking: **AMPLE**

Acreage: **8.73**

Ext Surface: **STEEL & STUCCO**

Drive Surface: **PAVED**

Wooded Lot: **No**

Listing Comments: **Southeast Industrial building for sale. 96,758 square feet with 14,160 office space. Heavy power, and make-up air system. Bridge cranes in place. High-quality two story office environment.**

Listed by:

**S J WISINSKI**  
  
**COMPANY**

**Wisinski, S J. and Co.**

**(616) 942-8877**

Information deemed reliable, but not guaranteed.  
 Copyright 2007 MLS Exchange, Inc. All rights reserved

---

RESOLUTION NO. \_\_\_\_\_

CITY OF KENTWOOD  
KENT COUNTY, MICHIGAN

A RESOLUTION TO APPROVE THE  
ESTABLISHMENT OF PLANT REHABILITATION  
DISTRICT IN THE CITY OF KENTWOOD FOR  
PUREFLEX, INC.

WHEREAS, Act 198 of Public Acts of 1974, as amended, provides for the establishment of Plant Rehabilitation Districts in local governmental units; and

WHEREAS, Pureflex, Inc. has petitioned the City of Kentwood to establish a Plant Rehabilitation District on its property located at 4242-44<sup>th</sup> Street and described on the attached Exhibit "A", incorporated herein; and

WHEREAS, in the case of a proposed Plant Rehabilitation District in the city of Kentwood, the city assessor must make a determination that property comprising not less than 50% of the state equalized value of the industrial property in the proposed district is obsolete; and

WHEREAS, the City of Kentwood levies an ad valorem tax at a rate which together with other taxing units in the City exceeds \$30.00 for each \$1,000.00 of State Equalized Value; and

WHEREAS, the construction, acquisition, alteration or installation of the proposed facility has not commenced at the time of filing for the request to establish this district; and

WHEREAS, written notice has been given by certified mail to the owners of all real property within the proposed Plant Rehabilitation District setting the date of October 18, 2011 at 7:00 P.M in the City Commission Chambers at a regular City Commission meeting, as the time and place at which these owners and any other residents or taxpayers of the City were given an opportunity for a hearing on the establishment of a Plant Rehabilitation District; and

WHEREAS, the city of Kentwood City Commission deems it to be in the public interest of the City of Kentwood to establish the Plant Rehabilitation District; and

WHEREAS, the City of Kentwood has determined that not less than 50 percent of the state equalized valuation of the property within the proposed Plant Rehabilitation District is obsolete;

NOW THEREFORE BE IT RESOLVED, that the City Commission of the City of Kentwood, Michigan does resolve that, pursuant to the authority granted by Act No. 198 of the Michigan Public Acts of 1974, as amended, there is hereby established a Plant

PureFlex, Inc. Rehab

Page 3

Rehabilitation District in the City of Kentwood, encompassing property owned by 4242 LLC, and described on the attached Exhibit "A", incorporated herein.

BE IT FURTHER RESOLVED that said Rehabilitation District shall be known as PureFlex, Inc. Plant Rehabilitation District; and

BE IT FURTHER RESOLVED that all resolutions of parts of resolutions inconsistent herewith are hereby rescinded.

EXHIBIT "A"

That part of the Northwest quarter, Section 25, Town 6 North, Range 11 West, City of Kentwood, Kent County, Michigan, described as: Commencing at the Northwest corner of Section 25; thence North  $90^{\circ} 00'$  East 1,327.69 feet along the North line of Section 25 to the Northwest corner of the Northeast quarter of said Northwest quarter and the place of beginning of this description; thence North  $90^{\circ} 00'$  East 300.00 feet along the said North line; thence South  $02^{\circ} 09' 41''$  East 980.03 feet along the East line of the West 300.00 feet of the Northeast quarter of said Northwest Quarter; thence South  $77^{\circ} 40'$  West 190.95 feet; thence North  $89^{\circ} 48'$  West 100 feet; thence North  $00^{\circ} 12'$  East 321.98 feet; thence South  $90^{\circ} 00'$  West 25.20 feet; thence North  $02^{\circ} 09' 41''$  West 698.30 feet along the West line of the Northeast quarter to the place of beginning. Subject to and together with an easement for ingress as contained in the instrument recorded in Liber 3586 Page 1224.

Also including that part of the Northwest quarter, Section 25, Town 6 North, Range 11 West, City of Kentwood, Kent County, Michigan, described as: Commencing at the Northwest corner of Section 25; thence North  $90^{\circ} 00'$  East 1,627.69 feet along the North line of Section 25; thence South  $02^{\circ} 09' 41''$  East 980.03 feet along the East line of the West 300.00 feet of the Northeast quarter of said Northwest quarter to the place of Beginning of this description; thence South  $02^{\circ} 09' 41''$  East 344.20 feet along said East line; thence North  $89^{\circ} 56' 29''$  West 300.58 feet along the South line of the North half of said Northwest quarter; thence North  $00^{\circ} 12'$  East 303.21 feet; thence South  $89^{\circ} 48'$  East 100.00 feet; thence North  $77^{\circ} 40'$  East 190.95 feet to the place of beginning.

The foregoing resolution was proposed by Commissioner \_\_\_\_\_

and supported by Commissioner \_\_\_\_\_

AYES: Commissioners: \_\_\_\_\_

\_\_\_\_\_

NAYS: \_\_\_\_\_

\_\_\_\_\_

ABSTAIN: \_\_\_\_\_

ABSENT: \_\_\_\_\_

RESOLUTION DECLARED ADOPTED

\_\_\_\_\_  
Dan Kasunic  
Kentwood City Clerk

I hereby certify that the foregoing is a true and complete copy of a resolution adopted by the City Commission of the City of Kentwood, Kent County, Michigan at a regular meeting held on October 18, 2011, and that the public notices of said meeting were given pursuant to Act No 267 of the Michigan Public Acts of 1976, including in the case of a special or rescheduled meeting notice of publication or posting at least eighteen (18) hours prior to the time set for the meeting.

\_\_\_\_\_  
Dan Kasunic  
Kentwood City Clerk

RESOLUTION NO. \_\_\_\_\_

CITY OF KENTWOOD  
KENT COUNTY, MICHIGAN

A RESOLUTION TO APPROVE AN APPLICATION FOR  
AN INDUSTRIAL FACILITIES EXEMPTION CERTIFICATE FOR  
A REHABILITATION FACILITY  
IN THE CITY OF KENTWOOD FOR  
PUREFLEX, INC.

WHEREAS, Pureflex, Inc. pursuant to provisions of Act 198 of Public Acts of 1974, as amended, made application for a Plant Rehabilitation District for property located in the City of Kentwood, the legal description is attached as Exhibit "A"; and the City of Kentwood, having found that the requirements of Section 4 of said Act were existing and duly met, created the Pureflex, Inc. Plant Rehabilitation District by Resolution No. \_\_\_\_\_ dated October 18, 2011; and

WHEREAS, said Pureflex, Inc., submitted an application for a Industrial Facilities Exemption Certificate for a rehabilitation facility at 4242 44<sup>th</sup> Street SE, in the City of Kentwood, County of Kent, on September 20, 2011, (the legal description is the same as described in Exhibit "A"); and the City of Kentwood now makes the following findings of fact: THAT

- 1) Upon receipt of the application for the Industrial Facilities Exemption Certificate, each local unit affected by said application was duly notified of its

filing, and that a public hearing was held on October 18, 2011 with respect to said application, at which said units of government, the assessor, and the applicant were granted a hearing.

- 2) The commencement of construction of the facility occurred no sooner than six months before the filing of the application for the Industrial Facilities Exemption Certificate, with the proposed facility located within a Plant Rehabilitation District established by the City of Kentwood under Act 198 of Public Acts of 1974, as amended.
- 3) The request to establish a Plant Rehabilitation District was filed with the City of Kentwood prior to the construction on the facility.
- 4) The Kentwood City Assessor has made the determination that property comprising not less than 50% of the state equalized value of the industrial property is obsolete, and
- 5) Completion of the facility will occur in the City of Kentwood and has the reasonable likelihood of retaining employment or will provide new employment in the City of Kentwood.
- 6) The application of Pureflex, Inc constitutes a Rehabilitation Facility under P.A. 198 of the Public Acts of 1974 as amended, and is situated within Pureflex, Inc. Plant Rehabilitation District, duly established by this Commission.

WHEREAS, if the State Equalized Value of which when added to the sum of the aggregate State Equalized Value of real and personal property exempt from ad valorem taxes under this Act in the City of Kentwood exceeds five percent (5%) of the total SEV of the City of Kentwood, it is hereby determined that the granting of the Industrial Facilities Exemption Certificate for a Rehabilitation Facility not have the effect of substantially impeding the operating of the City of Kentwood or any other unit of government, and will not impair the financial soundness of said units;

NOW THEREFORE BE IT RESOLVED that the application for an Industrial Facilities Exemption Certificate be approved as follows:

- A) In accordance with Act 198 of the Public Acts of 1974, as amended, the Industrial Facilities Exemption Certificate for a Rehabilitation Facility is hereby granted for a period of eight years.

BE IT FURTHER RESOLVED that all resolutions or parts of resolutions inconsistent herewith are hereby rescinded.

EXHIBIT "A"

LEGAL DESCRIPTION

That part of the Northwest quarter, Section 25, Town 6 North, Range 11 West, City of Kentwood, Kent County, Michigan, described as: Commencing at the Northwest corner of Section 25; thence North 90° 00' East 1,327.69 feet along the North line of Section 25 to the Northwest corner of the Northeast quarter of said Northwest quarter and the place of beginning of this description; thence North 90° 00' East 300.00 feet along the said North line; thence South 02° 09' 41" East 980.03 feet along the East line of the West 300.00 feet of the Northeast quarter of said Northwest Quarter; thence South 77° 40' West 190.95 feet; thence North 89° 48' West 100 feet; thence North 00° 12' East 321.98 feet; thence South 90° 00' West 25.20 feet; thence North 02° 09' 41" West 698.30 feet along the West line of the Northeast quarter to the place of beginning. Subject to and together with an easement for ingress as contained in the instrument recorded in Liber 3586 Page 1224.

Also including that part of the Northwest quarter, Section 25, Town 6 North, Range 11 West, City of Kentwood, Kent County, Michigan, described as: Commencing at the Northwest corner of Section 25; thence North 90° 00' East 1,627.69 feet along the North line of Section 25; thence South 02° 09' 41" East 980.03 feet along the East line of the West 300.00 feet of the Northeast quarter of said Northwest quarter to the place of Beginning of this description; thence South 02° 09' 41" East 344.20 feet along said East line; thence North 89° 56' 29" West 300.58 feet along the South line of the North half of said Northwest quarter; thence North 00° 12' East 303.21 feet; thence South 89° 48' East 100.00 feet; thence North 77° 40' East 190.95 feet to the place of beginning.

The foregoing resolution was proposed by Commissioner \_\_\_\_\_

and supported by Commissioner \_\_\_\_\_

AYES: Commissioners: \_\_\_\_\_

\_\_\_\_\_

NAYS: \_\_\_\_\_

\_\_\_\_\_

ABSTAIN: \_\_\_\_\_

ABSENT: \_\_\_\_\_

RESOLUTION DECLARED ADOPTED

\_\_\_\_\_

Dan Kasunic  
Kentwood City Clerk

I hereby certify that the foregoing is a true and complete copy of a resolution adopted by the City Commission of the City of Kentwood, Kent County, Michigan at a regular meeting held on October 18, 2011, and that the public notices of said meeting were given pursuant to Act No. 267 of the Michigan Public Acts of 1976, including in the case of a special or rescheduled meeting notice of publication or posting at least eighteen (18) hours prior to the time set for the meeting

\_\_\_\_\_

Dan Kasunic  
Kentwood City Clerk



## MEMO

### Mayor's Office

To: Ordinance Committee  
From: Rich Houtteman, Deputy Administrator  
Richard Mattice, Police Chief  
Subject: Nuisance Ordinance Revision (Snow Removal on Improved Pathways)  
Date: October 4th, 2011

#### **ACTION REQUESTED:**

Approval of the attached amended Nuisance Ordinance Chapter No. 34, Article 2 Sec. 34-31 (7).

#### **BACKGROUND:**

As Non-Motorized Pathway Facilities are developed in the public right of way, creating fair language that requires equitable effort to remove the obstruction of snow is needed. Standard sidewalks are five (5) feet in width whereas Non-Motorized Pathway Facilities are at least eight (8) feet in width and more commonly now ten (10) feet in width. Language contained below simply requires that all of these improved paths within the public right-of-way be free of wintry obstructions at least to a minimum width of 5 feet.

---

#### Sec. 34-31 - Nuisance declared

*(7) Failure by an owner or occupant of a parcel of real property on which a **an improved pathway facility within the public right-of-way in the form of a sidewalk or non-motorized pathway facility** abuts to keep a **minimum width of five (5) feet** of such portion of the sidewalk improved pathway facility clear from snow, ice or other obstruction that results in impairing or impeding travel on such sidewalk improved pathway facility. Any accumulation of two or more inches of snow shall be considered sufficient to impair or impede free passage. Such accumulation must be removed within 12 hours of the cessation of snowfall; however, if snowfall ends between 6:00 p.m. and sunrise, the snow must be removed within 12 hours of sunrise.*