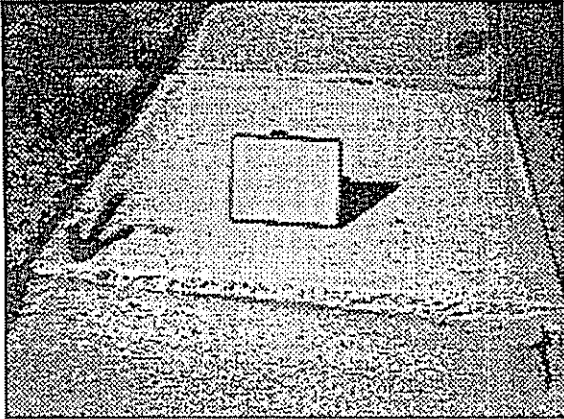
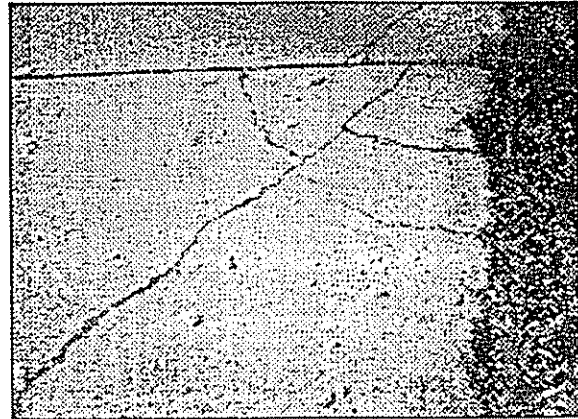


DEFICIENCY CRITERIA FOR SIDEWALK AND DRIVEWAY APPROACH

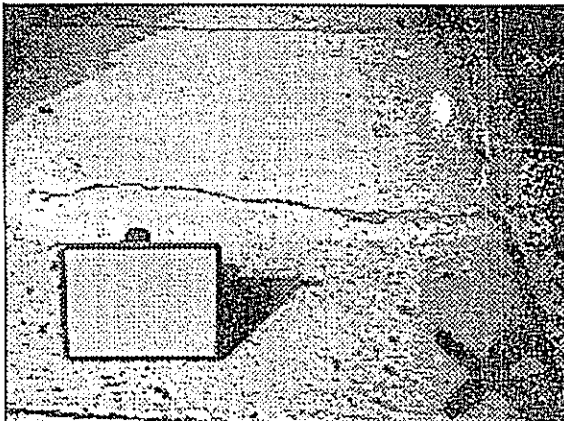
The following photographs illustrate the deficiency criteria used during inspection of sidewalks and driveway approaches.



1. DIFFERENCE IN ELEVATION
An elevation difference between squares of $\frac{3}{4}$ " or greater



2. CRACKS
A crack (or portion thereof) that is $\frac{1}{2}$ " or more in width and 24" or more in length

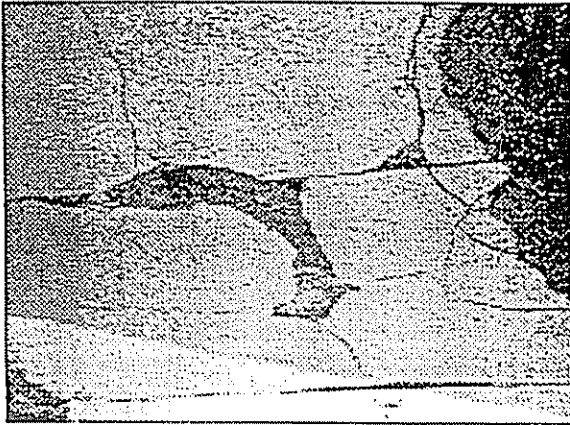


3. CRACKS
A crack that is $\frac{3}{4}$ " or wider and any length

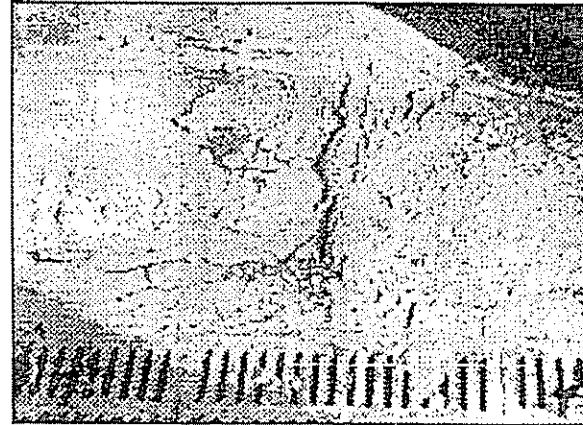


4. SURFACE SPALLING
Surface spalling (a chipping away or crumbling of the surface) in excess of 5 square feet per square and $\frac{1}{2}$ " deep

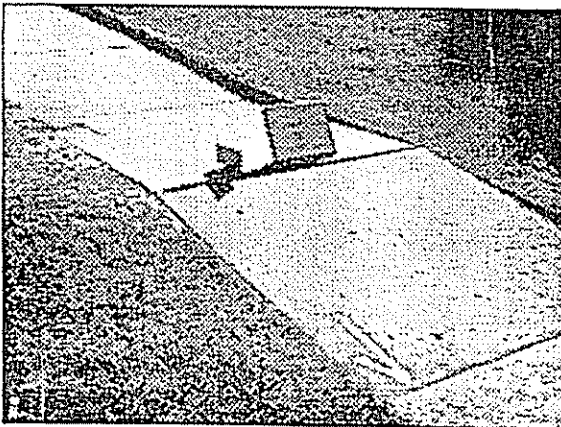
DEFICIENCY CRITERIA...continued



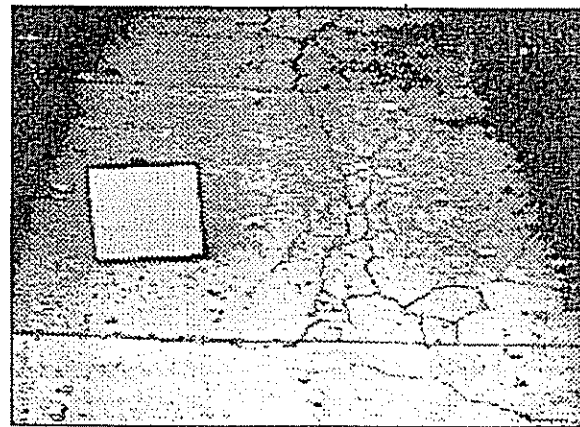
5. HOLES
A hole that is $\frac{3}{4}$ " or greater in depth and two inches or greater in diameter



6. RESIDUE MATERIAL
Residue material attached to a square that is $\frac{1}{2}$ " or more in height



7. ELEVATION DIFFERENCE
A square that has risen or settled and has not caused an elevation difference between squares but has a grade difference change in the individual sidewalk square greater than 4" in five feet from adjacent squares



8. MULTIPLE CRACKS
An individual square containing multiple cracks of any width, length, and/or depth in excess of ten square feet